

CORiTEC® 350i X PRO Series



# The High-End Performance Class

Fastest Performance  
for Exceptional Indications



**imes-icore®**  
Dental & Medical Solutions



5 AX  
5-axis  
Machining

A/B  
Auto-  
calibration

ION  
2-fold  
Ionizer

Automated  
Cleaning

powerCLAMP  
Clamping System

Variety of  
holder systems

# Performance that inspires

## UP TO **50%** FASTER MILLING

The CORiTEC 350i X PRO Series from imes-icore combines precision, efficiency, and performance. It ensures exceptional surface quality and delivers optimal results for all indications.

With up to 50% shorter processing times, the machine sets new standards. A precise control system, **powerCLAMP** clamping mechanism, and a powerful 3 kW milling spindle guarantee outstanding stability, efficiency, and speed. The loader variant with a 15-slot workpiece changer ensures continuous productivity. Additionally, the stainless steel blank holder provides absolutely vibration-free stability during the milling process.

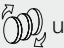


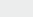


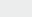
The CORiTEC 350i X PRO Series – an optimized professional machine series, perfectly tailored to the demands of high-end dental labs. Even with challenging and complex indications, it guarantees reliable and exceptional results.



CORiTEC  
350i X PRO



CORiTEC  
350i Loader X PRO

Technical data		
Fully automatic workpiece changer	Manual	 up to 15-fold
Stainless steel blank holder	1	4
Materials		
Ceramics and hybrid materials	✓	✓
Metals and alloys	✓	✓
Polymers and plastics	✓	✓
Indications		
All common indications	  	  





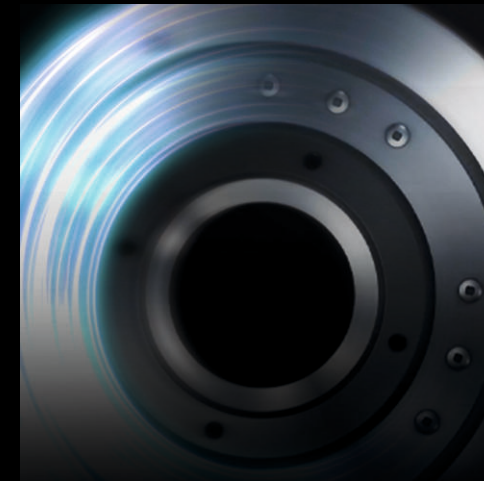
## Maximum Performance: Wet & Dry

### FOR EVERY MATERIAL REQUIREMENT

- ✓ Wet machining with integrated filter / cooling lubrication system ensures precise results with outstanding surface quality – ideal for glass ceramics, composites and titanium.
- ✓ Dry machining is particularly used for zirconia, PMMA, and CoCr. During dry machining, the resulting chips and dust are optimally extracted by the integrated suction system. This makes cleaning the machine interior easier and faster.

## **X**clusive Features

### ALL ADVANTAGES AT A GLANCE



#### UP TO **50%** FASTER MILLING OPERATIONS

The CORiTEC 350i X PRO Series reduces processing times by up to 50% and delivers superior surface quality, especially on metal materials, thanks to its powerful and stable high-frequency spindle.

Benefit from increased productivity and enhanced quality.

- ✓ Excellent surface quality
- ✓ Extended tool life thanks to optimized smooth running and improved system stability
- ✓ Absolute encoders with a 0.15 µm resolution ensure maximum precision and surface finish



#### PARTICULARLY QUIET RUNNING THANKS TO HIGH-FREQUENCY SPINDLE

The water-cooled HF spindle impresses with its exceptionally smooth operation, significantly extending the lifespan of both the spindle and milling tools. At the same time, it delivers outstanding performance when using 6 mm shank tools.

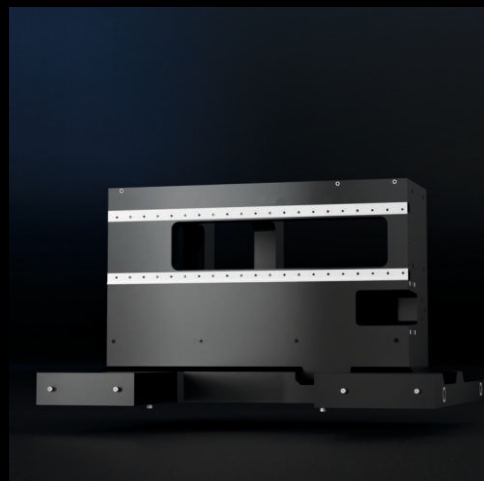
- ✓ Powerful 3.0 kW spindle with up to 60,000 rpm
- ✓ 3-fold hybrid ball bearing for precision and stability
- ✓ Maximum tool life through high torque, even at low rotational speeds



## BLANK / ADAPTER CHANGE WITHOUT LOSS OF POSITION

The innovative zero-point clamping system module **powerCLAMP** enables ultra-fast and precise blank/adapter changes with just one click. It enhances efficiency, precision, and optimizes workflows, especially in the processing of various dental materials.

- ✓ 4x clamping force
- ✓ Versatile adapter integration
- ✓ Maximum flexibility for diverse milling applications



## PERFECT STABILITY FOR TROUBLE-FREE MANUFACTURING

The outstanding properties of the polymer concrete base make this high-end machine system the perfect choice for the most demanding applications in dental technology.

- ✓ Maximum stability
- ✓ Effective vibration damping
- ✓ Enhanced precision
- ✓ Extended tool lifespan



## TOOL MAGAZINE CHANGE IN SECONDS

Tool magazines changed in seconds: With SmartControl and up to 60 tools in three color-coded magazines, tool loading becomes more efficient and convenient – ensuring maximum productivity

- ✓ 20-fold tool changer
- ✓ Quick exchange
- ✓ Easy loading

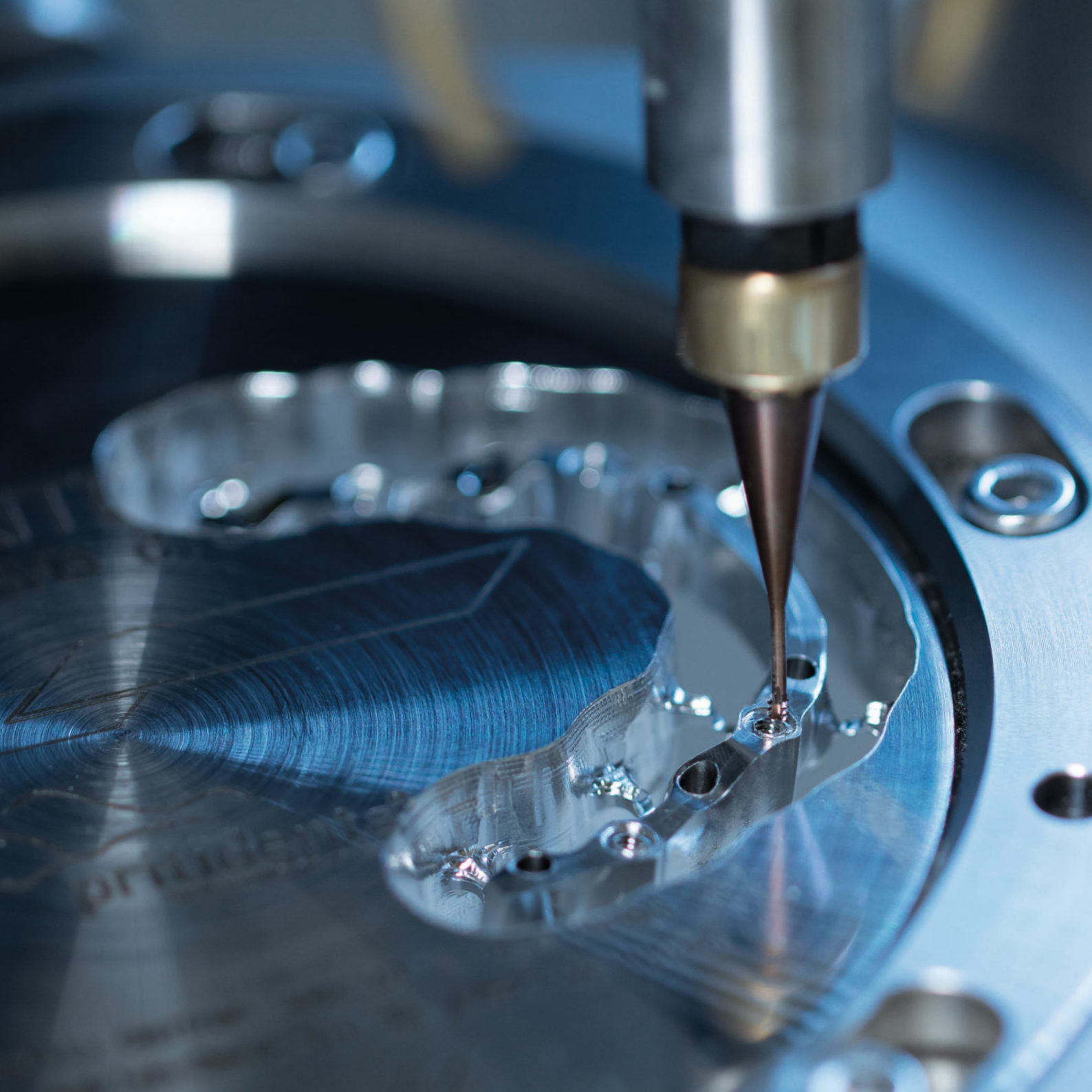


## SMART AND INTUITIVE OPERATION

The machines of the CORITEC 350i X PRO Series are easy to operate thanks to a smart touch screen and intuitive user interface. After a brief introduction, the system can be used without time-consuming training. Intelligent assistants, such as those for cleaning and auto-calibration, support the user in daily operations.

By connecting to the DentalSmartMarket (DSM) and receiving regular automatic updates, you are always up to date.

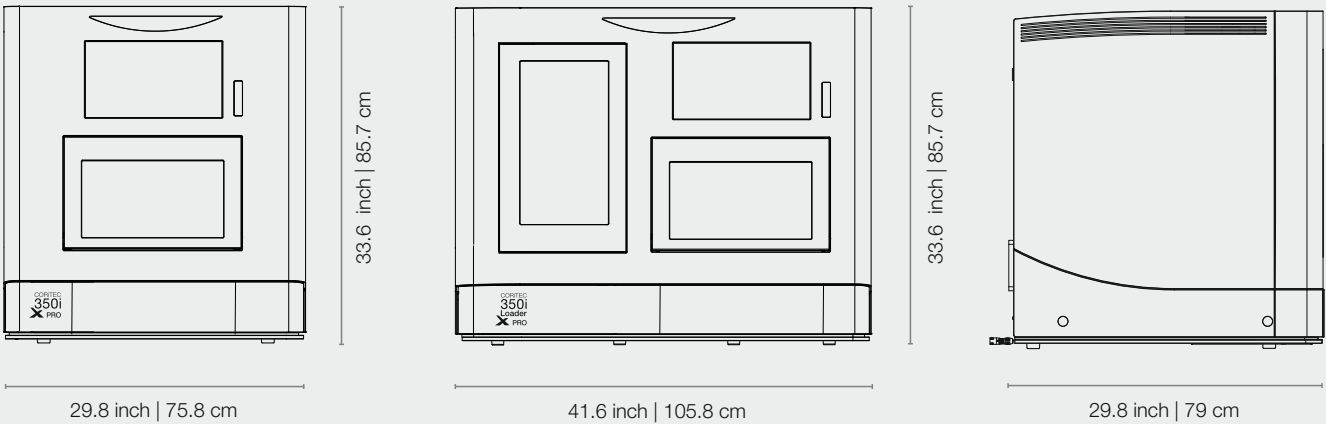




# Perfect Dimensions

## SOPHISTICATED, EFFICIENT DESIGN FOR MAXIMUM STABILITY

The CORiTEC 350i X PRO series combines compact dimensions with a well-thought-out, intelligent design. With a depth of only 79 cm, the CORiTEC 350i X PRO fits through standard doors, allowing for flexible integration into any workspace. Additionally, the machine can be installed on existing surfaces, provided they can support its weight. Its compact construction enables an especially space-saving installation of the machine system.

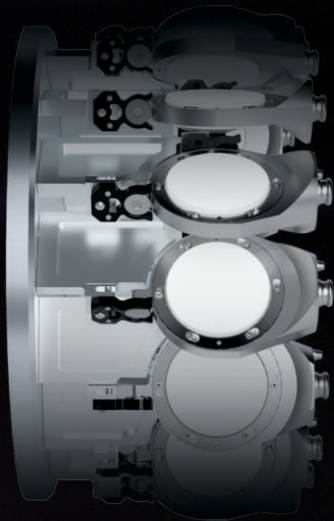






# 24/7 Automation for your laboratory

CORiTEC® 350i LOADER X PRO  
WITH 15-FOLD AUTOMATIC BLANK  
CHANGER



The CORiTEC 350i Loader X PRO features an automatic blank changer for up to 15 discs. The system comes standard with 8 workpiece holders, ensuring uninterrupted milling operations 24/7. This boosts efficiency and productivity while reducing costs - for a laboratory that operates at peak performance at all times.

CORiTEC  
350i  
Loader  
X PRO



# Freedom in Materials & Applications

FROM CERAMICS TO METALS – PRECISE  
SOLUTIONS FOR EVERY APPLICATION



PMMA	WAX
Zr	COMPOSITE
PEEK	SINT
Glass ceramics	Pre-Milled Abutments
CoCr	Ti

Standard	PreMilled Abutment	Full Dentures
C-Clamp	Block	Zero Point Clamping System

Crown, Bridge	Inlay, Onlay, Veneer	Hybrid Abutment	Splint
Full Denture	Model	Drilling Template	Model Casting
Bar	Telescope Technology	Abutment	Hybrid Processing

FEATURES

APPLICATIONS

CONTROL SOFTWARE

CAM SOFTWARE

ACCESSORIES

# Maximum flexibility

## HOLDERS AND ADAPTERS

The **powerCLAMP** zero-point clamping system enables precise positioning of discs and adapters with a pull-in force of 500 kg. The diamond-coated interface ensures a durable connection, while vibration-free milling guarantees exceptional machining accuracy and surface quality — ideal for demanding, high-precision applications, where machine stability plays a crucial role.

### 1 BLANK HOLDER

The sealed stainless steel Blank Holder offers high stability and is ideal for the precise machining of all common disc-shaped materials.

### 2 6-FOLD ADAPTER

With the 6-fold Adapter, up to six blocks or abutments can be processed simultaneously. Flexible, interchangeable strips facilitate adaptation to different adapter systems and enable quick material changes for maximum efficiency.

### 3 C-CLAMP HOLDER

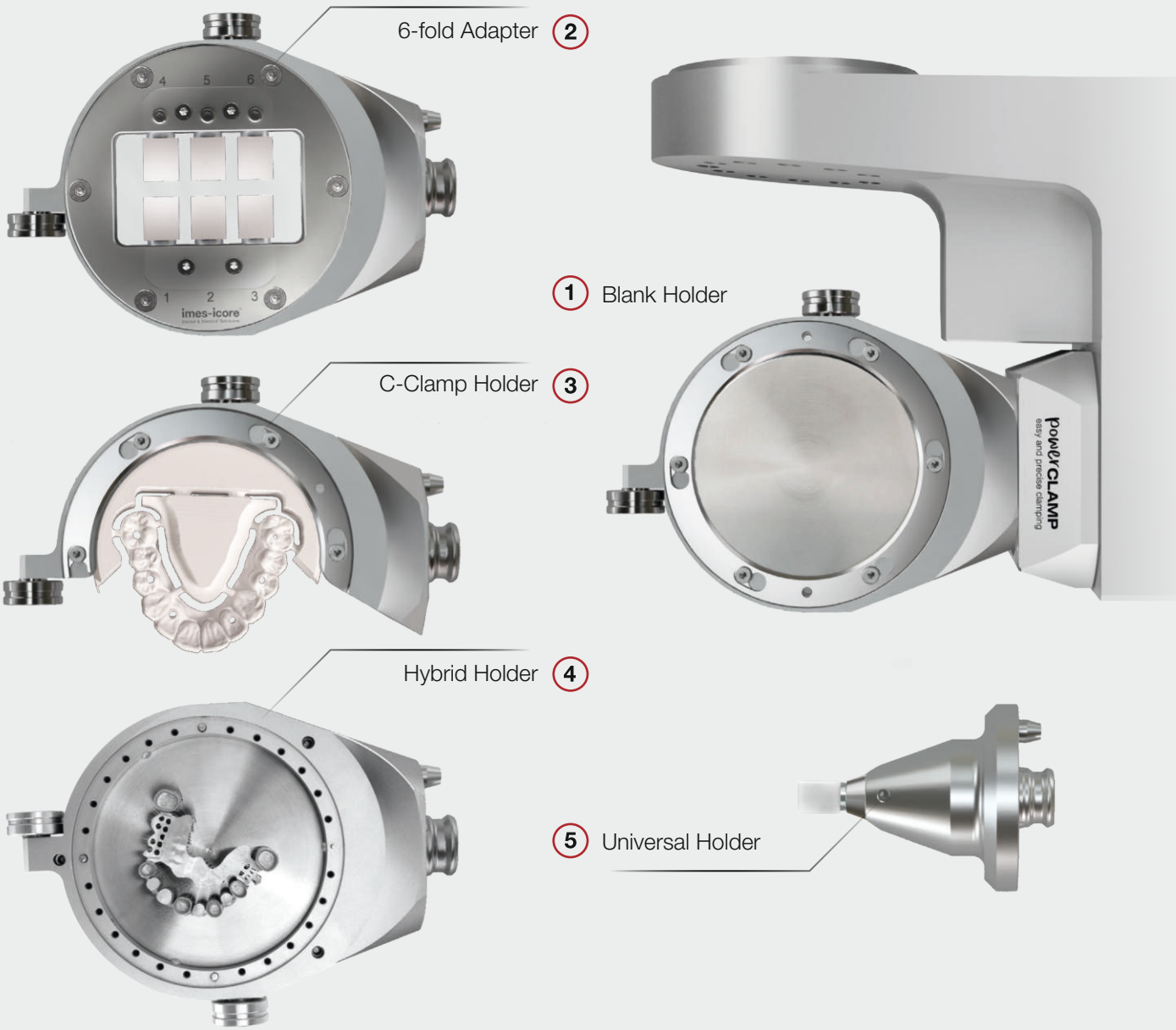
The half-open C-clamp Holder enables 5-axis machining up to 90° and opens up new possibilities for complex geometries and precise post-processing. This flexibility is particularly suitable for complex geometries that require high approach angles and for machining high undercut angles. Its design guarantees exact positioning for the best results.

### 4 HYBRID HOLDER

The Hybrid Holder enables hybrid processing in combination with a 3D metal printing system such as CORiTEC AM100. Printed restorations can be clamped and precisely milled with this holder. The CORiTEC 350i X PRO therefore combines the cost-effective production of restorations using 3D printing technology with high-precision milling. The perfect combination, especially for users with a high volume of metal restorations.

### 5 UNIVERSAL HOLDER

The Universal Holder is a single holder that can be used for various block materials and premilled abutment systems. The universal holder makes it possible to process the clamped objects in turning, milling and grinding processes. This technology offers high-speed processing as well as perfect and transition-free surfaces. With a wide selection of premilled abutment adapters and glass ceramic adapters, the universal adapter can be used flexibly for these applications.





# Versatile Possibilities

## INDICATIONS AND APPLICATIONS



### METAL PROCESSING

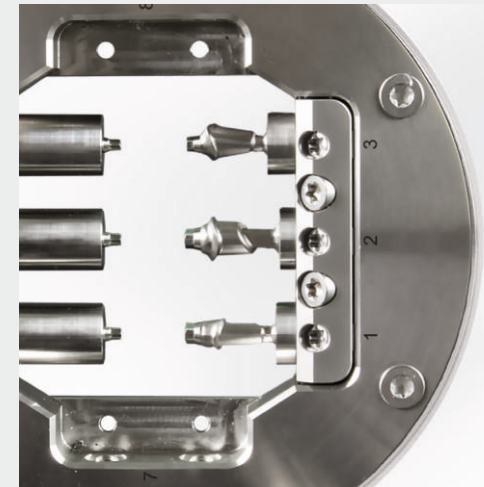
The machine guarantees high stability and therefore excellent surface quality when processing bars and bridges made of CoCr and titanium. Its precise processing ensures a perfect fit for long-lasting dentures - ideal for demanding dental applications.

- ✓ High sturdiness & stability
- ✓ Machining of CoCr and titanium discs
- ✓ Perfect surface quality and precision



### MILLING OF FULL DENTURES

The milling process for full dentures combines time and cost efficiency with maximum precision. It guarantees exact results through perfect accuracy of fit and offers flexible design options for base and occlusal surfaces – ideal for individual and highly esthetic prostheses.



### CORiTEC® preMill ABUTMENTS

The CORiTEC preMills are supplied with abutment screw and compatible libraries, modules and holders. They enable dental technicians and dentists to produce validated and efficient customized one-piece titanium abutments – with full control over quality and time, in compliance with FDA requirements.

- ✓ Short production times
- ✓ Validated overall system
- ✓ High accuracy of fit thanks to prefabricated implant interface



### GRINDING OF CAD/CAM BLOCKS

By using a 3-fold, 6-fold, or universal adapter, the CORiTEC 350i X PRO can process block materials such as lithium disilicate.

Most indications made from block materials are manufactured using wet processing, for which the CORiTEC 350i X PRO is perfectly suited.

- ✓ Crowns and bridge frameworkse
- ✓ Onlays, inlays and veneers



## THERAPEUTIC SPLINTS

CORiTEC machines enable the precise manufacture of therapeutic splints. They guarantee a precise fit and comfort thanks to flexible production options and meet the highest demands in laboratories and practices.

- ✓ Bite splints, bleaching splints
- ✓ Sleep apnea splints and Aligner



## HYBRID PROCESSING – SINTERING AND FINISH MILLING

The post-processing of printed restorations combines precise milling with cost-efficient manufacturing. With the optional Hybrid Holder, the CORiTEC 350i X PRO can be expanded to include hybrid manufacturing applications.

- ✓ High precision
- ✓ Cost-efficient manufacturing
- ✓ Compatible with CORiTEC AM100



## MILLED IMPLANT MODELS

With our CORiTEC machines, implant models are manufactured with precision and efficiency. The two-piece implant analog system simplifies exact repositioning, ensuring highly accurate implant restorations that meet the highest standards.

- ✓ Precise and realistic replication of implants
- ✓ Maximum accuracy



## CROWNS, BRIDGES AND MORE

From single crowns and bridges to implant work: With a wide range of materials, we guarantee the highest quality with short production times.

- ✓ Ceramics and hybrid materials
- ✓ Metals and alloys
- ✓ Polymers and plastics



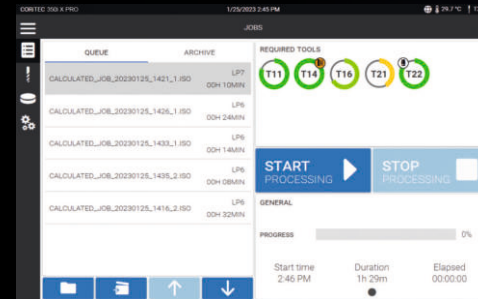
# Easy-to-use

## INTUITIVELY OPERABLE USER SOFTWARE

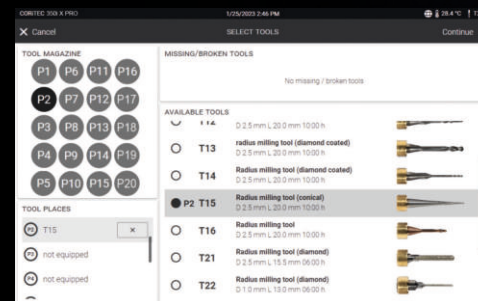
The SmartControl software enables intuitive operation of our milling machines – from job selection to monitoring the machine status. With a self-explanatory user interface in several languages, getting started is particularly easy. Just two clicks are all it takes to start a milling process. Benefit from software-supported efficiency that saves time and optimizes your workflow.

### CORiTEC® SmartControl

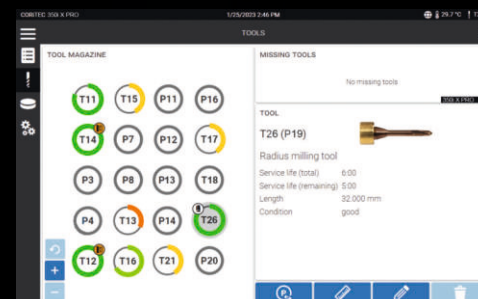
- ✓ Modern, intuitive design with touch operation and image-based instructions
- ✓ Intelligent selection of milling jobs
- ✓ Simple tool and material loading
- ✓ Auto-calibration of the machine
- ✓ Assistant-guided cleaning and maintenance
- ✓ Connection to the Dental Smart Market (DSM) platform
- ✓ Multilingual user interface
- ✓ Automatic updates for maximum safety
- ✓ Remote monitoring via integrated online camera
- ✓ Support via remote control



Automated transfer of information from the CAM software

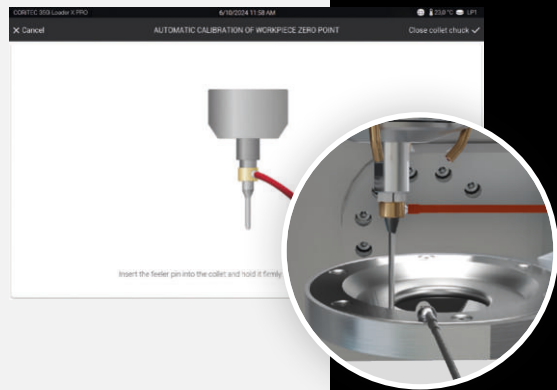


Optimum management of tools



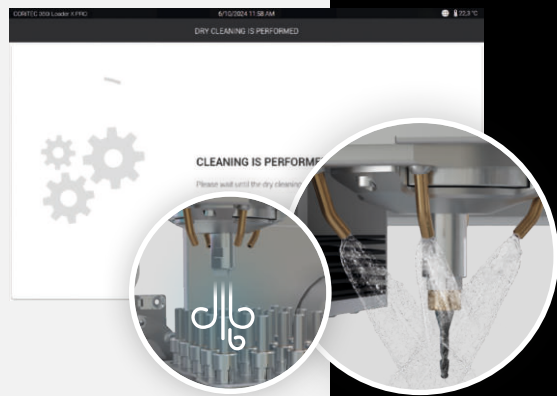
Optimized for touchscreen operation





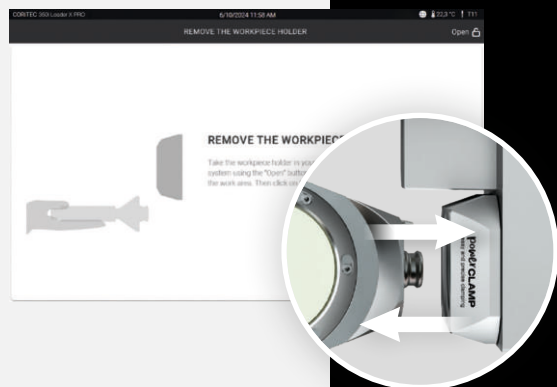
## AUTOCALIBRATION

Autocalibration enables quick and convenient handling to ensure consistently precise results. With intuitive step-by-step instructions and direct integration into the machine control system, the calibration process is simple and efficient. This saves you time and resources, while you can count on reliable and consistent precision.



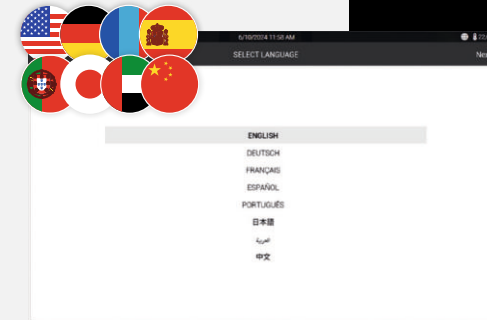
## ASSISTANT-GUIDED CLEANING

The assistant-guided cleaning process makes wet and dry cleaning your machine simple and efficient. The integrated step-by-step instructions ensure that the cleaning process is completed quickly and reliably – without time-consuming preparation or complex instructions. This function not only helps to extend the service life of the machine, but also ensures consistently high performance.



## SIMPLE HOLDER CHANGE

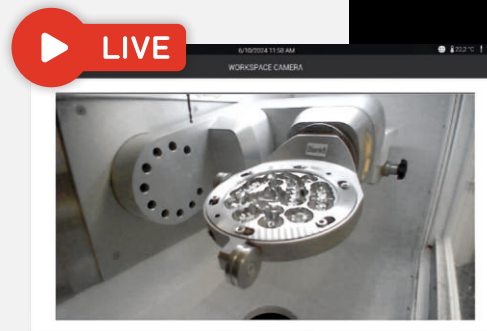
With the zero point clamping system, changing the holder is precise and uncomplicated. The control software guides users through the entire process with intuitive step-by-step instructions. As a result, the holder is positioned quickly and accurately, ensuring smooth operation and consistently precise results. At the same time, the workflow is optimized and the time required is significantly reduced.



## INDIVIDUAL LANGUAGE SELECTION

The flexible language options of the program interface support the operation in the preferred language. This versatility ensures intuitive use and maximum efficiency in day-to-day work worldwide.

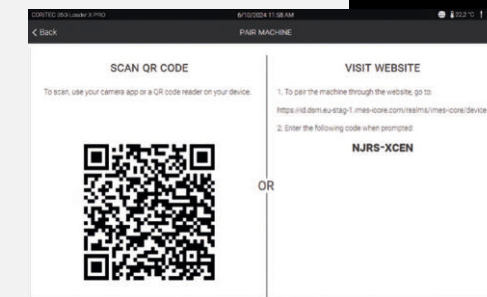
- ✓ German
- ✓ English
- ✓ Chinese
- ✓ Spanish
- ✓ French
- ✓ Portuguese
- ✓ Japanese
- ✓ Arabic



## MILLING PROCESS MONITORING

The integrated HD camera enables direct monitoring of the milling process in real time. If questions or challenges arise, the support team can respond quickly to ensure efficient support.

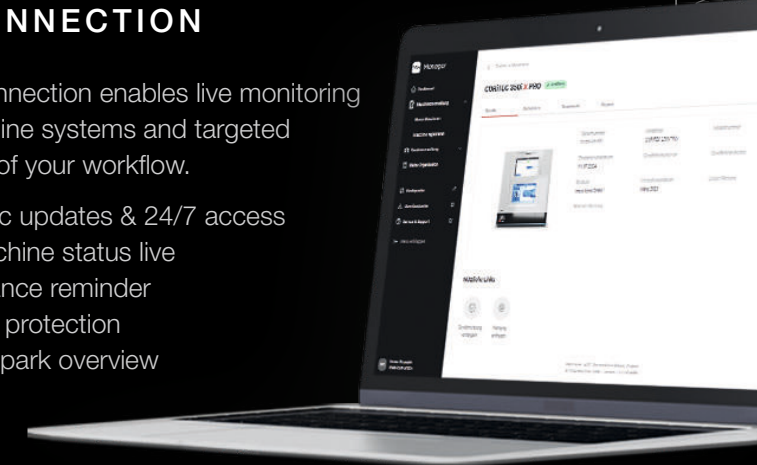
**CORITEC DSM**  
Dental Smart Market



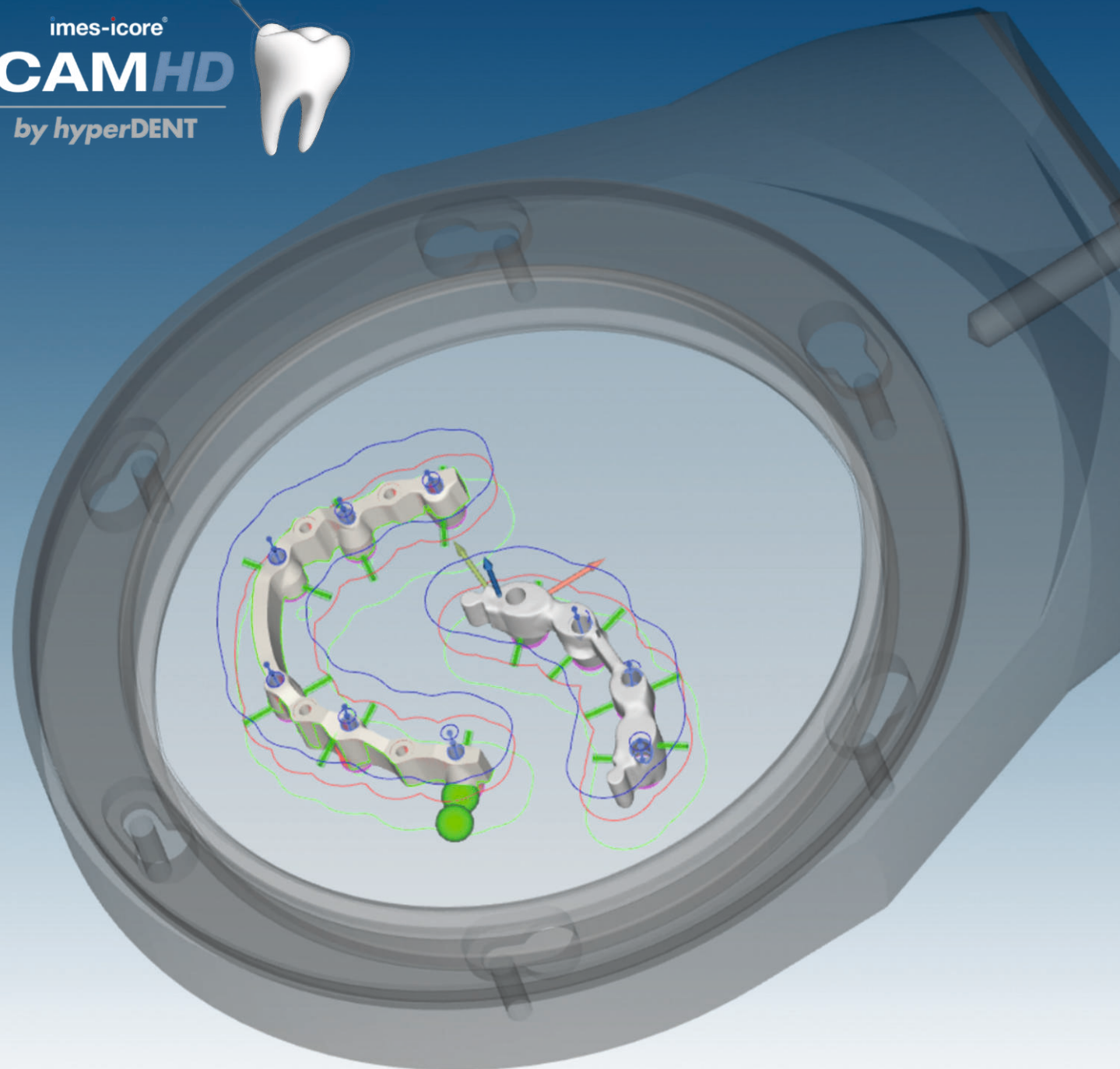
## DSM CONNECTION

The DSM connection enables live monitoring of your machine systems and targeted optimization of your workflow.

- ✓ Automatic updates & 24/7 access
- ✓ View machine status live
- ✓ Maintenance reminder
- ✓ Warranty protection
- ✓ Machine park overview







# Smart High-End Solution

PERFECTLY INTEGRATED CAM SOFTWARE  
 FOR ALL CORiTEC MACHINES, MATERIALS  
 AND INDICATIONS

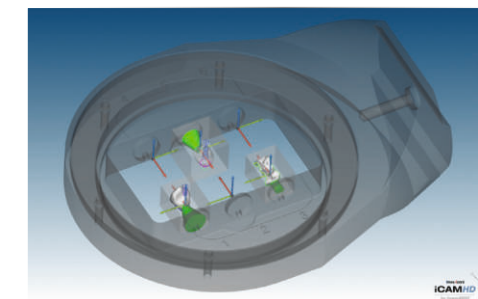
## CORiTEC® iCAMHD

The CORiTEC iCAMHD software combines a high level of automation with efficient order management. Thanks to the intuitive workflow, familiarization is quick and easy, while processing options can be managed individually. Automatic updates keep the software up to date at all times. Validated strategies ensure precise results and excellent surface quality, while integrated collision monitoring guarantees maximum safety in process control.

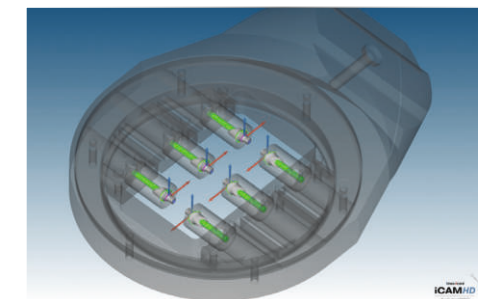
- ✓ hyperDENT based CAM-Software
- ✓ 3-month free trial and flexible payment model (purchase or subscription)
- ✓ CAM templates for fast and precise results

iCAM HD advantages at a glance:

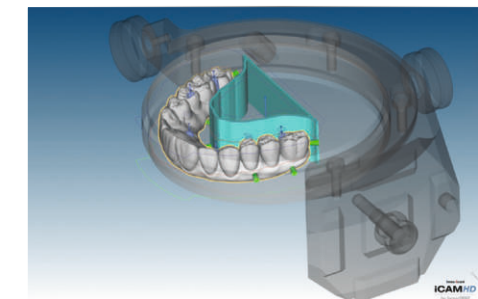
- ✓ High level of automation for more efficient production
- ✓ Intuitive workflow that enables fast familiarization
- ✓ Automatic updates that always keep the software up to date
- ✓ Tool path strategies for perfect surface quality
- ✓ Collision monitoring for maximum safety and reliability



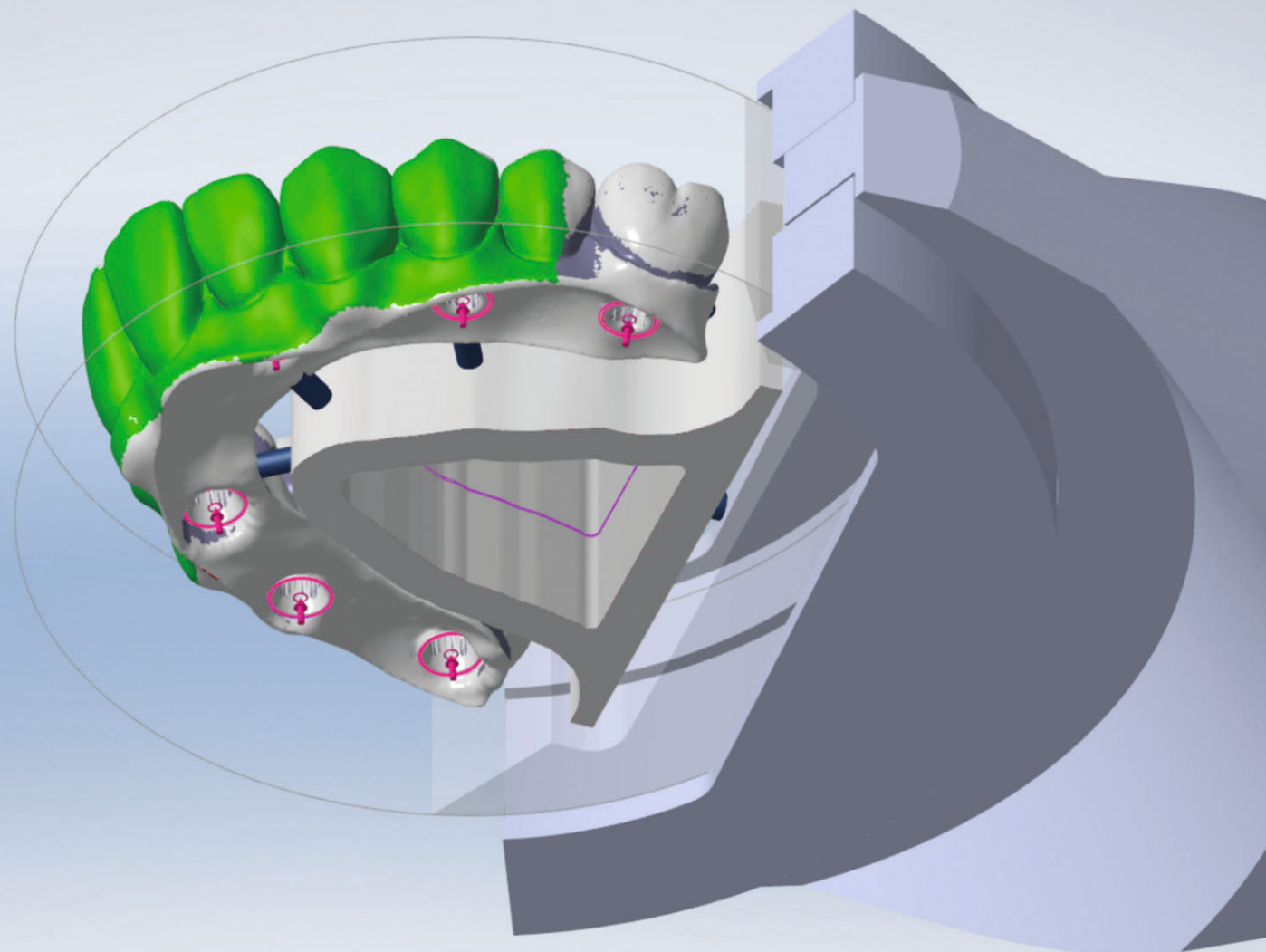
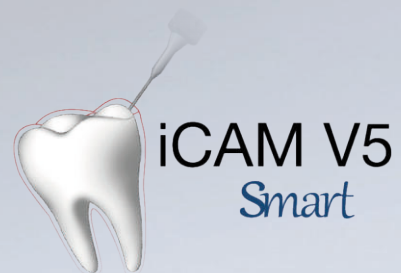
6-fold holder for ceramic blocks



6-fold CORiTEC preMill holder



Various applications with the C-Clamp holder



# Flexible and Smart

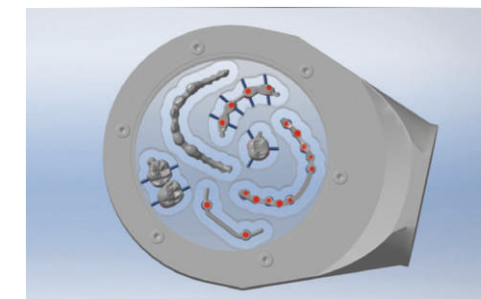
PERFECTLY INTEGRATED CAM SOFTWARE  
FOR ALL CORiTEC MACHINES, MATERIALS  
AND INDICATIONS

## CORiTEC® iCAM V5 smart

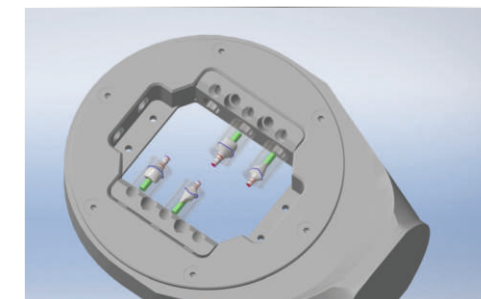
The CORiTEC iCAM V5 stands for exceptional surface quality and maximum accuracy of fit - ideal for all common dental materials. Optimized tool strategies reduce machining time, extend tool life and ensure particularly smooth machine operation. This ensures precise results in 5-axis machining and maximum efficiency of your CAD/CAM system.

Advantages at a glance:

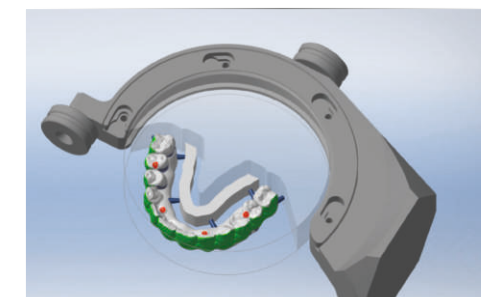
- ✓ **5-axis simultaneous processing:** Precision even with undercuts
- ✓ **No enforced annual fees:** Maximum cost efficiency
- ✓ **Wizard workflow:** Fully automatic, intuitive operation
- ✓ **ReFit function:** Flexible exchange of abutment geometries
- ✓ **Retaining bars:** Securely positioned for optimum results



Various applications in metal



6-fold CORiTEC preMill holder



Various applications with the C-Clamp holder



# Coordinated and Validated Workflow of the Entire System

## SEAMLESSLY INTERLOCKING PROCESSES

By combining iCAM software, high-quality milling machines, and specially developed CORITEC tools, you receive a validated complete system with comprehensive service and support from a single source. imes-core stands for first-class production solutions that seamlessly integrate software, precision milling and grinding tools, and powerful machine technology.





# Perfect Synergy

## Between Machine, Milling Tools, iCAM and Materials

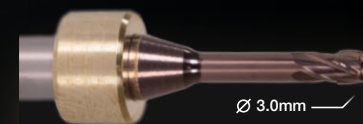
### CORiTEC® CoCr M6 disc

The dental CoCr disc is free from nickel, cadmium, beryllium, and lead. Restorations can be veneered using commercially available, conventionally melting ceramics with a matching coefficient of thermal expansion (CTE).

- ✓ Available in 10, 12, 13.5, 15, 16 and 18 mm



### IRONBITER



T71

CoCr



**T71 - 3.0 | 6.0 mm**

Ironbiter, Milling Tool (l = 15 mm)  
Art.-No. 530025 3006

- ✓ Up to 160 units
- ✓ Up to 15 hours of tool life

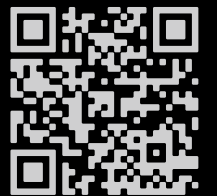
## Cutters and Grinders

### CORiTEC® TOOLS

CORiTEC milling tools guarantee precision and efficiency. Perfectly matched to our machines, they offer maximum performance, durability and optimum results – combined with the right materials for your applications.

- ✓ High-speed milling tools
- ✓ Torus milling tools
- ✓ Shaft tools
- ✓ Drilling tools
- ✓ Thread milling tools
- ✓ Aligner milling tools
- ✓ T-milling tools
- ✓ Standard milling tools

ALL TOOLS  
AT A GLANCE



To the milling tool brochure

## CAD/CAM Materials

### CORiTEC® MATERIALS

Our specially developed materials are perfectly matched to CORiTEC machines and guarantee maximum precision and quality. Made in Germany and validated for a wide range of applications, they meet the highest standards for the best results.

- ✓ priti®multidisc
- ✓ CORiTEC® splint comfort Polymere
- ✓ CORiTEC® splint basic Polymere
- ✓ CORiTEC® temp PMMA disc
- ✓ CORiTEC® gum PMMA disc
- ✓ CORiTEC® Titan Grade 5 disc
- ✓ CORiTEC® CoCr M6 / W8 disc
- ✓ GC® Initial LiSi Block
- ✓ GC® cerasmart270
- ✓ VITA ENAMIC® multiColor
- ✓ VITA VIONIC® BASE DISC HI
- ✓ VITA CAD-Temp®
- ✓ VITA YZ HT / VITA YZ T
- ✓ VITA YZ ST / VITA YZ XT
- ✓ VITA BLOCS® Mark II
- ✓ VITA SUPRINTITY® PC
- ✓ VITA ST, TriLuxe forte
- ✓ VITA YZ MULTITRANSLUCENT

ALL MATERIALS  
AT A GLANCE



To CORiTEC® Materials  
[www.pritidenta.com](http://www.pritidenta.com)



# Suction Systems

## DUST PROTECTION AND AIR CLEANING

	iVAC eco+	iVAC PRO+
Technical data		
Volume flow	260 m³/h	280 m³/h
Power	1200 W	1200 W
Filter system	Filter bag, HEPA filter	Teflon filter cartridge, automatic cleaning
Filter flow	25 l/min / 6.6 gpm	18 l/min / 4.76 gpm
Compatibility		
CORiTEC 350i	●●●	●●●
X PRO Series		



# Scanner

## DIGITAL IMPRESSION

### CORiTEC® i3Dscan color HR

- ✓ Enormously high scanning efficiency and precision
- ✓ Color texture scan
- ✓ Blue-light LED & high-resolution camera (3.2 MP)
- ✓ All modules included in the scope of delivery



### CORiTEC® i3Dscan color

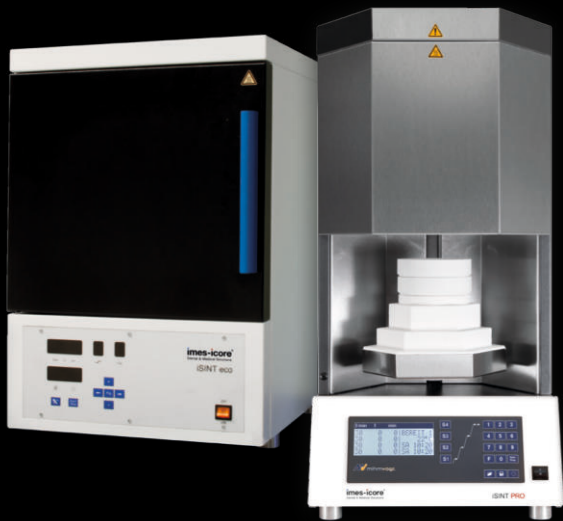
- ✓ Automatic object guidance into the measuring field
- ✓ Modern touch operation
- ✓ Easy to work with 180° opening

# Sintering Furnaces

## SINTERING PROCESS FOR ZIRCONIA

### iSINT eco

The iSINT eco combines high-quality technology with a space-saving design and a fair price. With a sintering dish of Ø 100 mm, it offers capacity for up to 25 units. The door hinge can be flexibly mounted on the right or left – ideal for a versatile laboratory environment.



### iSINT PRO

The iSINT PRO enables the sintering of up to 80 individual crowns. With four MoSi2 heating elements, it offers both long-term sintering and SPEED sintering at up to 120°C/minute. A 4-line LCD display simplifies program control. Additional functions such as timer and service programs as well as a pre-drying program make the iSINT PRO a flexible solution for modern laboratories.

	iSINT eco	iSINT PRO
Technical data		
Heating elements	4	4
Program memories	9	30
Combustion chamber capacity	1 x 100 (approx. 25 units)	2 x 120 (approx. 80 units)
Max. Heating rate	25 °C/min / 77 °F/min	120 °C/min / 120 °F/min
Power	1720 W	3200 W
Lift function	-	✓
Speedsintering	-	✓

# Machine Tables

## SOPHISTICATED FUNCTIONALITY

Our machine tables have been specially developed for different machine types and offer a combination of stability, functionality and modern design – for maximum efficiency and an attractive appearance.

The machine tables offer storage space, stable castors, integrated drawers and an area for extraction systems - ideal for daily use.

- ✓ Highest quality – Made in Germany
- ✓ High level of comfort and ergonomics
- ✓ Stability for dynamic processes
- ✓ Modern design
- ✓ Push-to-open function



# Everything at a glance

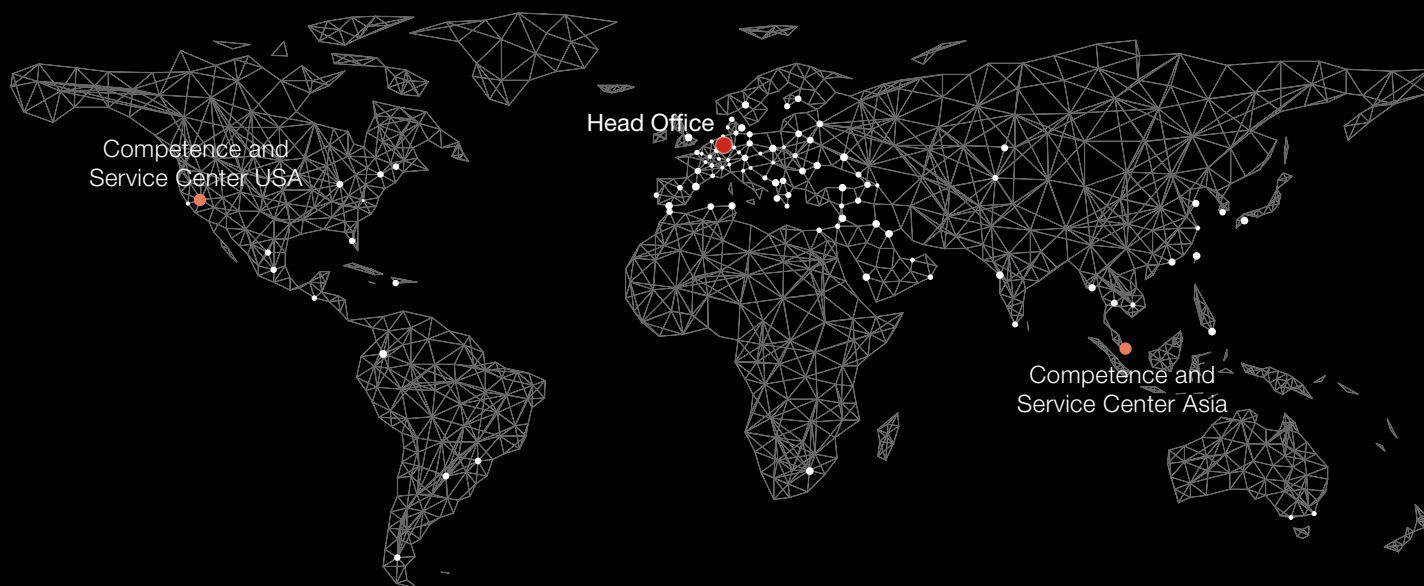
## CORiTEC® 350i X PRO SERIES IN NUMBERS

CORiTEC 350i X PRO		CORiTEC 350i Loader X PRO
Mechanics / electronics		
Basic structure (exterior)	Polymer concrete	
Number of axes / operation type	5 axes, simultaneous processing	
Maximum axis tilt	A axis 360° / B axis 115°	
Axis tilt (98mm blank holder)	A axis 30°, B axis 25°	
Spindle type	High frequency spindle	
Max. Spindle speed / power	60.000 rpm,, 3 kW	
Spindle cooling	Water-cooled	
Zero point clamping system	✓	
Blank changer	Manual	Up to 15 blanks with stainless steel holder
Tools	Milling and grinding tools with 6 mm shaft	
Tool changer	20-fold (with 3 exchange magazines, up to 60-fold)	
Tool length control	≤ 0.002 mm accuracy	
Software	SmartControl™, Windows based	
Control PC / Display	Integrated control PC / 15,6" fullHD Touchscreen	
Illumination	RGB LED illumination with status signaling	
Air pressure	6,0 – 9,0 psi @ 80 l/min / 21.13 gpm	
Coolant tank	3,7 l / 0.98 gal	
Connection requirements		
Weight	approx. 220 kg	approx. 265 kg
Width x depth x height	758 x 790 x 857 mm	1058 x 790 x 857 mm
Line voltage / frequency	100 V – 240 V / 50/60 Hz	



# Global Support

SALES AND SUPPORT PARTNERS  
IN OVER 100 COUNTRIES



Since 2002, imes-icore® has been a leader in CAD/CAM systems for the dental industry. With customized solutions for laboratories, milling centers and dental practices of all sizes, we offer high-performance milling and grinding systems. Our open system philosophy guarantees easy integration into existing workflows.



To the imes-icore  
website



Configure machine  
directly

**imes-icore®**  
Dental & Medical Solutions

**imes-icore GmbH**  
Im Leibolzgraben 16  
36132 Eiterfeld

☎ +49 (0) 66 72/898 228  
✉ [dental@imes-icore.com](mailto:dental@imes-icore.com)  
[www.imes-icore.com](http://www.imes-icore.com)