



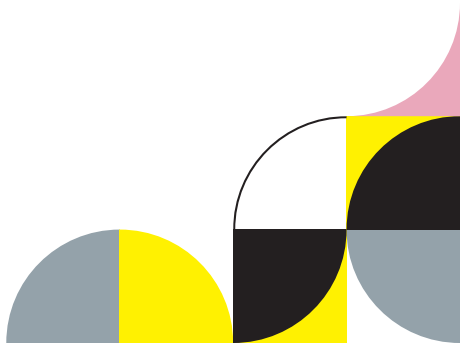
UCAN
MILL

**MILLED DESIGN
BY CANDULOR**

CANDULOR.

We have understood
prosthetics since 1936.

Milling discs for full dentures,
partial and hybrid dentures, as
well as implant prosthetics.



TCR MONO



⚗	Material	TwinCrossedResin
⊗	Feature	Good abrasion and good plaque resistance
⌈⌋	Thickness	20 mm
∅	Diameter	98.5 mm

TCR MONO

Brief description

TCR Mono is a tooth-colored, monochromatic stained disk for the CAD/CAM technology. The disks are made of TCR material (TwinCrossedResin), which has been available on the market for over 40 years. TCR material is a highly modified type of polymethyl methacrylate (PMMA) variant in which both the polymer and the matrix are evenly cross-linked.

Shades

A1, A2, A3, A3.5, B1, B3, C2, D2

Bleach shade: BL3

Types of restorations

- Full dentures
- Partial dentures
- Implant-supported dentures
- Tooth-supported dentures



TCR MULTI



🧪	Material	TwinCrossedResin
⊗	Feature	Highly esthetic due to natural translucency, appealing surface design and harmonious color gradient
⌈⌋	Thickness	20 mm
∅	Diameter	98.5 mm

TCR MULTI

Brief description

TCR Multi is a multichromatic colored disk consisting of three layers. It features a harmonious color gradient to achieve a high level of esthetics in the individually milled tooth segments without subsequent characterization.

With the tooth lines PhysioSet TCR and PhysioSelect TCR, which also consist of the proven TCR material, hybrid works can be created from a single material family.

Shades

A1, A2, A3, A3.5, B1, B3, C2, D2

Bleach shade: BL3

Types of restorations

- Full dentures
- Partial dentures
- Implant-supported dentures
- Tooth-supported dentures



XPLEX BASE



🧪	Material	XPLEX
⊗	Feature	High-impact strength, low plaque adhesion and discoloration
⏏	Thickness	30 mm
⊘	Diameter	98.5 mm

XPLEX BASE

Brief description

XPLEX Base is a PMMA disk for fabricating denture bases for removable dentures using the abrasive manufacturing process.

The disks are made of the proven XPLEX material, a high-impact modified PMMA with high-impact quality.

Shades

1 Soft Pink – transparent, not veined

5 Pink – transparent, veined

34 Original Pink – semi-opaque, veined

Types of restorations

- Full dentures
- Partial dentures
- Implant-supported dentures
- Tooth-supported dentures



XPLEX BOND



🧪	Material	PMMA-based material
⚗️	Feature	Self-curing
☰	Contents	Kit with XPLEX Bond polymer (10 pcs), XPLEX Bond monomer (10 pcs), XPLEX Bond Modelling Liquid (1 pc), application syringes (10 pcs), cannulas (10 pcs)

XPLEX BOND

Brief description

XPLEX Bond is a PMMA-based composite material for bonding resin-based teeth and segments into a prefabricated denture base.

The kit contains 10 pre-dosed monomer and polymer bottles to achieve an optimal mixture.

Applications

- Connecting prefabricated teeth with a milled or printed base
- Connecting milled teeth with a milled base



Wish to try?
We would be pleased
to advise you.

Candulor Dental GmbH

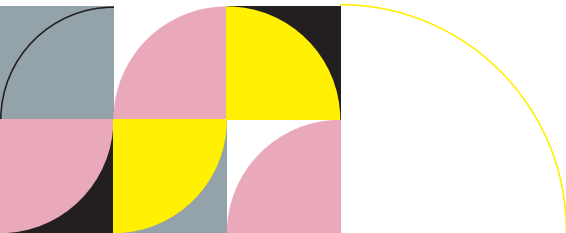
Am Riederngraben 6
D-78239 Rielasingen-Worblingen

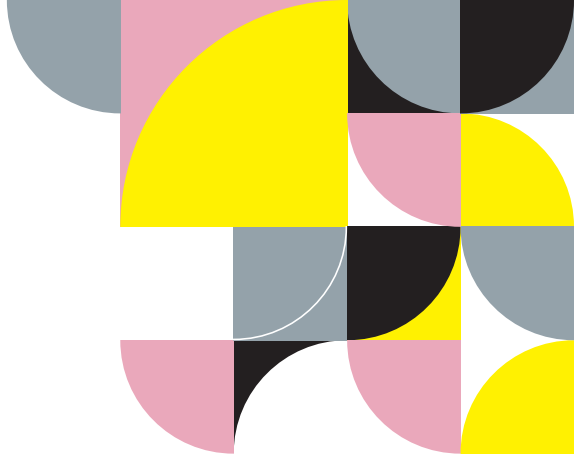
T + 49 (0) 7731 79783-0

F + 49 (0) 7731 28917

E info@candulor.de

W candulor.com





768673/en/2025-02-01

CANDULOR. HIGH END ONLY.