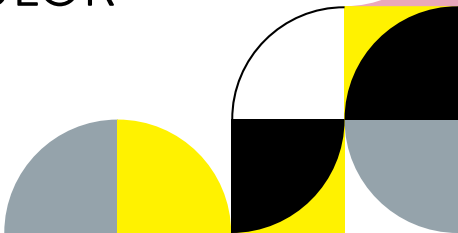




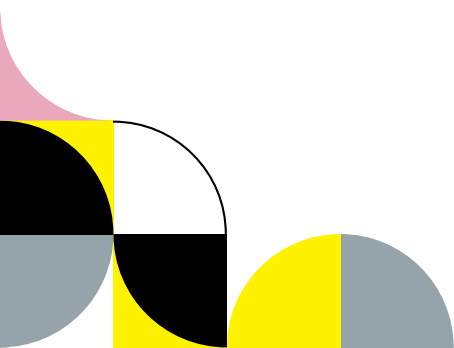
TOOTH DESIGN MADE
BY CANDULOR



Candulor.

We have been designing
teeth since 1936.

Tooth lines and materials
for full, partial and hybrid
dentures, as well as implant
prosthetics.



PHYSIOSTAR NFC⁺

The composite denture tooth is the “Star” in the Candulor portfolio when it comes to maximum esthetics and function. The NFC⁺ material impresses with its very good abrasion resistance, which is significantly higher than that of all the tooth materials previously used by Candulor.



PHYSIOSTAR NFC⁺



Flexural strength	119 ± 12 MPa
Bending module	4000 ± 130 MPa
Ball indentation	210 ± 3 MPa
Compressive strength	560 ± 9 MPa
Material	NanoFilledComposite ⁺
Layers	4
Molds	15 upper jaw molds 5 lower jaw molds
Shades	12 Candulor shades, 16 A–D shades, 2 Bleach shades
Posterior teeth	Condyliform II NFC ⁺ Bonartic II NFC ⁺

PHYSIOSELECT TCR

The fresh, youthful design of the PhysioSelect TCR was developed from the origin of proven tooth molds. The teeth, which are designed in Switzerland, are made of the reliable TwinCrossedResin material of the third generation.



PHYSIOSELECT TCR



Flexural strength	118 ± 7 MPa
Bending module	2808 ± 176 MPa
Ball indentation	185 ± 2 MPa
Compressive strength	390 ± 12 MPa
Material	TwinCrossedResin
Layers	4
Molds	18 upper jaw molds 4 lower jaw molds
Shades	16 A-D shades 2 Bleach shades
Posterior teeth	BonSelect TCR Bonartic TCR

PHYSIOSET TCR

Exceptional variety of tooth molds and an age-appropriate surface profile distinguish this tooth line. The double cross-linked TCR material has good material and resistance properties.



PHYSIOSET TCR



Flexural strength	116 ± 8 MPa
Bending module	3159 ± 70 MPa
Ball indentation	176 ± 7 MPa
Compressive strength	340 ± 12 MPa
Material	TwinCrossedResin
Layers	3
Molds	22 upper jaw molds 8 lower jaw molds
Shades	9 Candulor shades, 16 A–D shades, 2 Bleach shades
Posterior teeth	Bonartic TCR

PREFERENCE ACRYLIC

The Preference tooth line is a combination of esthetics and user-friendliness. The denture teeth have been selected for universal use in partial, full and combination dentures.



* This tooth line is not available in Switzerland.

PREFERENCE ACRYLIC



Flexural strength	120 ± 10 MPa
Bending module	3000 ± 80 MPa
Ball indentation	170 ± 5 MPa
Material	Acrylic
Layers	3
Molds	15 upper jaw molds 5 lower jaw molds
Shades	16 A–D shades 2 Bleach shades
Posterior teeth	Preference posterior teeth

UCAN MILL

TCR MONO | TCR MULTI

TCR Mono and TCR Multi are two tooth-colored, mono-chromatic resp. multichromatic stained disk for the CAD/CAM technology. The disks are made of TCR material (TwinCrossedResin) and can be used for the fabrication of single teeth and tooth segments.

Together with the tooth lines PhysioSelect TCR and PhysioSet TCR, hybrid works can be created from a single material family.



UCAN MILL

TCR MONO | TCR MULTI



Flexural strength	118 ± 7 MPa
Bending module	2808 ± 176 MPa
Ball indentation	185 ± 2 MPa
Compressive strength	390 ± 12 MPa
Material	TwinCrossedResin
Thickness	20 mm
Diameter	98.5 mm
Shades	A1, A2, A3, A3.5, B1, B3, C2, D2, BL3





CANDULOR. HIGH END ONLY.

662563/en/2025-06-24

Candulor AG

Boulevard Lilienthal 8
CH-8152 Glattpark (Opfikon)
Switzerland
info@candulor.com
www.candulor.com

Candulor Dental GmbH

Am Riedergraben 6
DE-78239 Rielasingen-Worblingen
Germany



EC

REP