

CORiTEC® 150i Series



The All-in-One Starter System

Affordable Excellence for Labs



imes-icore®
Dental & Medical Solutions







5-axes
Machining




Manual Quick
Clamping System




Autocalibration
(Optional)



Automated
Cleaning



Integrated
Ionizer



Variety of
Holder Systems

All-in-One Starter-System

FOR MODERN DENTAL LABORATORIES

Are you looking for an entry-level CAD/CAM technology that is both powerful and affordable?

The CORiTEC 150i series has been specially developed for small and medium-sized dental laboratories and impresses with its user-friendly all-in-one complete solution that enables smooth integration into everyday laboratory work. With its ability to precisely process materials such as zirconium oxide, PMMA, wax and composite, it guarantees the highest production quality. Thanks to the attractive price-performance ratio and the simple metal processing (CORiTEC 150i PRO), the system offers an ideal introduction to digital manufacturing. Low operating costs and fast processing times increase efficiency and maximize profitability in everyday laboratory work.



CORiTEC 150i dry



CORiTEC 150i PRO

Technical data		
Wet processing	✗	✓
Dry processing	✓	✓
Integrated water tank	✗	✓
Chip tray	✓	✗
Materials		
Zirconium / wax / Glass ceramics	✓	✓
PreMilled abutments	✓ (CoCr)	✓ (CoCr, Ti)
Polymers / plastics	✓	✓
Indications		
All common indications	●●○	●●○

Best in Class!

GET STARTED NOW WITH NEW
FEATURES AND THE LATEST UPGRADES



METAL PROCESSING OF COCR BLANKS*

- ✓ Good surface quality
- ✓ High variety of indications
- ✓ High flexibility

INTEGRATED HD CAMERA

- ✓ Camera view of the milling area and tool changer
- ✓ Perfect for remote support by users and dealers
- ✓ Live view/recording of the last milling process

CORITEC® PREMILL ABUTMENTS

- ✓ Short production times
- ✓ Validated overall system
- ✓ High accuracy of fit thanks to prefabricated implant interface



Top-Features

ALL ADVANTAGES AT A GLANCE



POWER MEETS PRECISION

Get started with an exceptional combination of power, speed and precision: The high-frequency spindle with 860 watts and 100.000 rpm makes the CORiTEC 150i series the ideal solution for entry-level dental production.

- ✓ Precise and uniform rotary movements enable perfect material processing
- ✓ Powerful spindle enables the processing of a wide range of materials such as zirconia, PMMA, wax and pre-milled abutments
- ✓ Processing times are reduced



BLANK / ADAPTER CHANGE WITHOUT LOSS OF POSITION

- ✓ Thanks to the manual quick-clamping system the various holder systems can be changed quickly with consistent precision. This enables simple operation without the need for time-consuming calibrations.
- ✓ The quick-clamping system ensures that the work-piece is held securely in place, which increases precision and therefore surface quality during milling.



PROCESSING COMPLEX INDICATIONS WITH THE C-CLAMP HOLDER

The shape of the semi-open C-Clamp blank holder enables processing with a very high angle of attack for complex restorations.

- ✓ Facilitates the machining of complex geometries
- ✓ Large undercuts can be milled perfectly



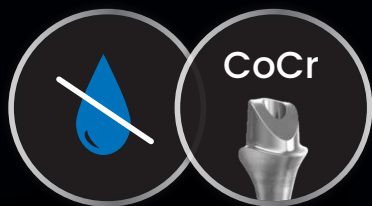
INCREASED AUTOMATION THROUGH 10-FOLD TOOL CHANGER

Less manual intervention enables a higher level of automation, while the fast tool change significantly reduces shortens machining times. This allows you to carry out complex work with different materials and tools efficiently and versatily.

- ✓ Less manual intervention, more time for production
- ✓ Fast tool change for continuous production

The CORiTEC® 150i Series: **dry** vs **PRO**

DIFFERENCES IN DETAIL



Designed for dry milling

Ideal for materials such as:

- ✓ Zirconia / hybrid materials
- ✓ CoCr preMilled abutments
- ✓ Polymers / resins

-
- ✓ Simplified machine maintenance
 - ✓ Especially suitable for use in laboratories with less complex material requirements

Including chip tray



Discover our cost-efficient solution with the CORiTEC 150i dry for precise and reliable dry machining – ideal for indications with high dry machining requirements. Benefit from significant cost savings with consistently high quality!



Designed for wet/dry milling

Offers a greater variety of materials:

- ✓ Ceramics / Hybrid materials
- ✓ CoCr preMilled abutments
- ✓ Ti preMilled abutments
- ✓ Polymers / Plastics
- ✓ Glass ceramics

-
- ✓ Extended range of functions through combinable machining processes (wet + dry)

Integrated water tank



Thanks to the flexible processing options – both dry and wet – the entry-level model of the CORiTEC 150i PRO offers exceptional versatility and is suitable for a wide range of materials. This allows you to constantly increase efficiency and turnover!



Maximum Performance: Wet & Dry

FOR A WIDE VARIETY OF MATERIALS

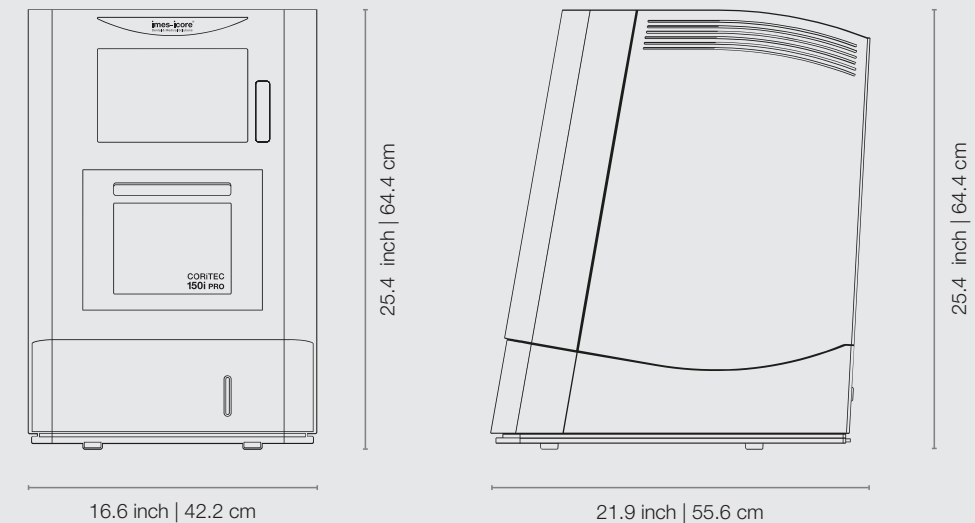
✓ Wet processing with a cooling lubrication system ensures precise results and outstanding surface quality - ideal for glass-ceramic, composite and pre-milled titanium abutments.

✓ Dry processing enables you to achieve fast, precise results with zirconia, pre-milled abutments made of CoCr and PMMA - with excellent surface quality and less dust generation.

Perfect Dimensions

SOPHISTICATED, EFFICIENT DESIGN FOR MAXIMUM STABILITY

The CORiTEC 150i series combines compact design with advanced technology for remarkable efficiency. Its robust construction and advanced technology enable fast and precise results even for complex tasks. Ideal for laboratories that require both stability and flexibility in their processes. Enjoy optimal performance and perfect results in a space-saving design.



Variety in Material & Application

FROM CERAMICS TO PREMILLED ABUTMENTS –
PRECISE PRECISE SOLUTIONS FOR EVERYDAY
LABORATORY WORK



PMMA	WAX
Zr	COMPOSITE
PEEK	PreMilled Ti-Abutment
Glass Ceramics	PreMilled CoCr-Abutment
CoCr	

Standard	PreMilled Abutment	Full Dentures
C-Clamp	Block	Manual Clamping System

Crown, Bridge	Inlay, Onlay, Veneer	Hybrid Abutment	Splint
Full Denture	Model	Drilling Template	Model Casting
Bar	Telescope Technology	Abutment	Hybrid Processing

*Material and indications for CORITEC 150i PRO

FEATURES

APPLICATIONS

CONTROL SOFTWARE

CAM SOFTWARE

ACCESSORIES

Maximum Flexibility

HOLDER AND ADAPTER

Are you looking for an entry-level CAD/CAM system for your dental laboratory? The CORiTEC 150i series was specially developed for this purpose and offers you a wide range of options in one system.

The manual quick clamping system enables quick and easy workpiece changes. With the flexible holders and adapters of the CORiTEC 150i series, you can design your production processes efficiently and precisely – ideal for laboratories that require both stability and flexibility in the smallest of spaces.

1 BLANK HOLDER

The closed aluminum blank holder offers high stability and is ideal for the precise processing of all common materials in blank form.

6-FOLD ADAPTER

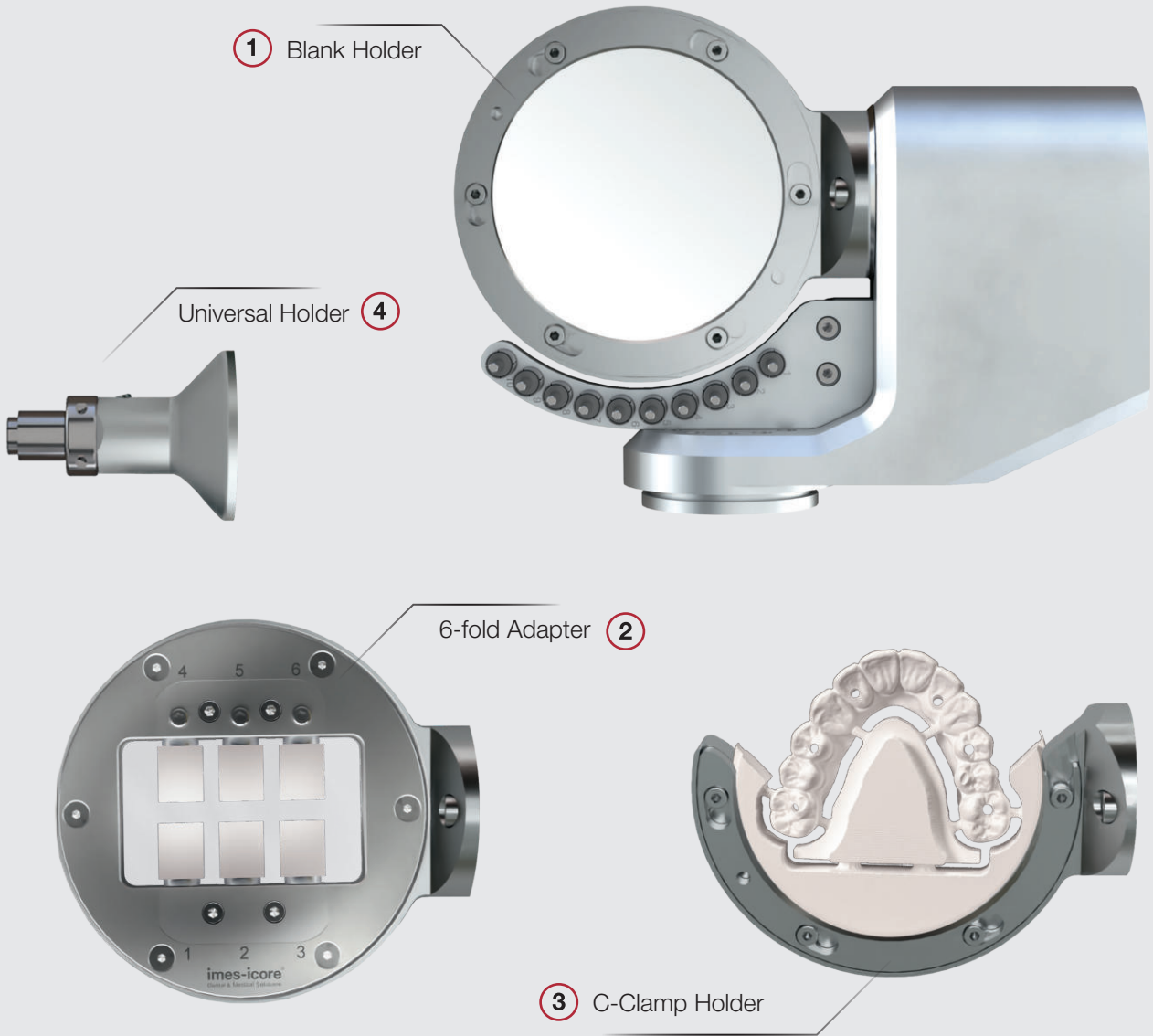
With the 6-fold adapter, up to six blocks or abutments can be processed simultaneously. Flexible, interchangeable strips make it easier to adapt to different adapter systems and enable quick material changes for maximum efficiency.

3 C-CLAMP HOLDER

The half-open blank holder enables 5-axis machining with an axis angle of up to 90° and expands the technical possibilities of your milling machine. This flexibility is particularly suitable for complex geometries and precise reworking. Its design ensures exact positioning during milling.

4 UNIVERSAL HOLDER

The universal adapter is a versatile single holder for turning, milling and grinding operations. It offers high accuracy of fit and enables tool-friendly processing. With a wide selection of adapters, it is ideal for glass ceramic blocks and various abutment systems.



Versatile Possibilities

INDICATIONS AND APPLICATIONS



THERAPEUTIC SPLINTS

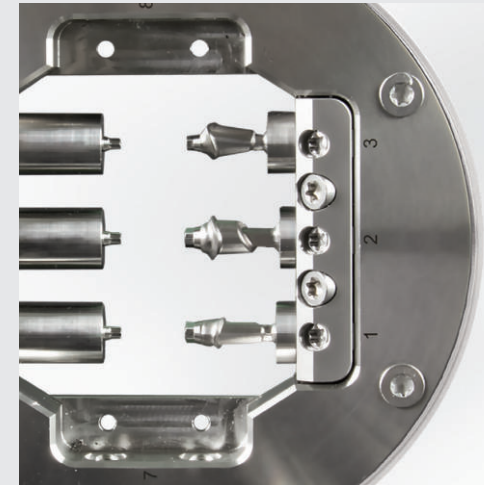
CORiTEC machines represent precision and innovation in the manufacture of therapeutic splints. They combine state-of-the-art technology with maximum flexibility and guarantee perfect results for laboratories and practices.

- ✓ Bite splints, bleaching splints
- ✓ Mandibular advancement splint and aligners



MILLING OF FULL DENTURES

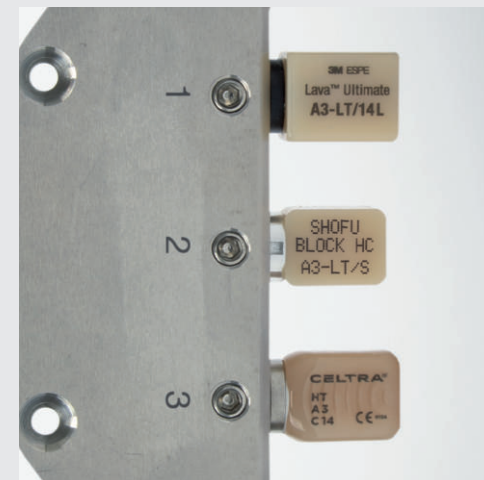
The milling process for full dentures combines time and cost efficiency with maximum precision. It guarantees exact results thanks to perfect accuracy of fit and offers flexible design options for base and occlusal surfaces – ideal for Individual and highly esthetic prostheses.



CORiTEC® preMill ABUTMENTS

The CORiTEC preMills are supplied with abutment screw and compatible libraries, modules and holders. They enable dental technicians and dentists to produce validated and efficient customized one-piece titanium abutments – with full control over quality and time, in compliance with FDA requirements.

- ✓ Short production times
- ✓ Validated overall system
- ✓ High accuracy of fit thanks to prefabricated implant interface



GRINDING OF CAD/CAM BLOCKS

The 6-fold and 3-fold adapter ensures the precise fabrication of various tooth restoration solutions. The flexibility of the various adapters enables efficient processing.

- ✓ Crowns and bridge frameworks
- ✓ Onlays, inlays and veneers



MODEL CASTING

The CORITEC 150i series enables the precise fabrication of model casting prostheses made of PEEK material, for example, which is ideal for the fabrication of allergy-free and low-weight model casting.

- ✓ Allergy-free and low-weight model casting
- ✓ Cost-efficient, functional and comfortable

CROWNS, BRIDGES AND MORE

Perfection down to the last detail: Whether crowns, bridges or full dentures – our machines guarantee flawless results and satisfied customers.

- ✓ Ceramics and hybrid materials
- ✓ PreMilled abutments made of CoCr and Ti
- ✓ Polymers and plastics

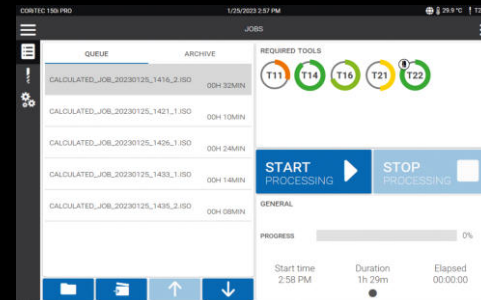
Easy-To-Use

INTUITIVELY OPERABLE USER SOFTWARE

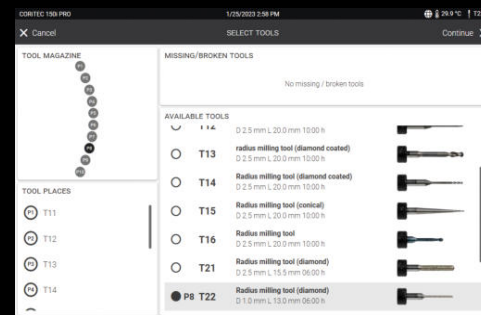
The SmartControl software enables intuitive operation of our milling machines – from job selection to monitoring the machine status. With a self-explanatory user interface in several languages, getting started is particularly easy. Just two clicks are all it takes to start a milling process. Benefit from software-supported efficiency that saves time and optimizes your workflow.

CORiTEC® SmartControl

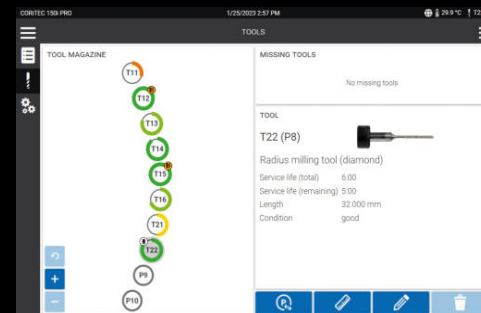
- ✓ Modern, intuitive design with touch operation and image-based instructions
- ✓ Intelligent selection of milling jobs
- ✓ Simple tool and material loading
- ✓ Auto-calibration of the machine
- ✓ Assistant-guided cleaning and maintenance
- ✓ Connection to the Dental Smart Market (DSM) platform
- ✓ Multilingual user interface
- ✓ Automatic updates for maximum safety
- ✓ Remote monitoring via integrated online camera
- ✓ Support via remote control



Automated transfer of information from the CAM software

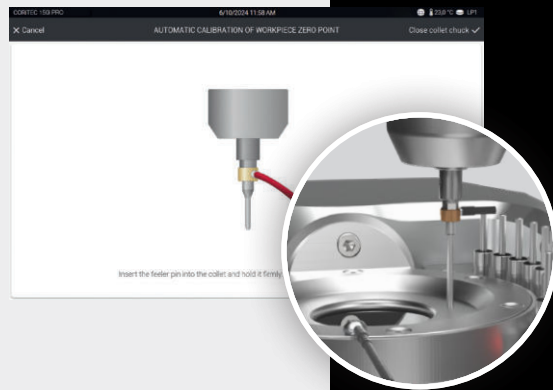


Optimal management of tools



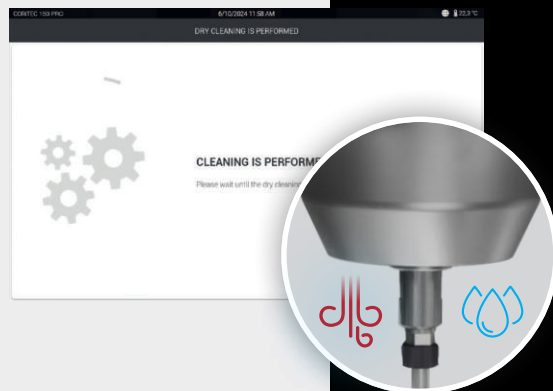
Optimized for touchscreen operation





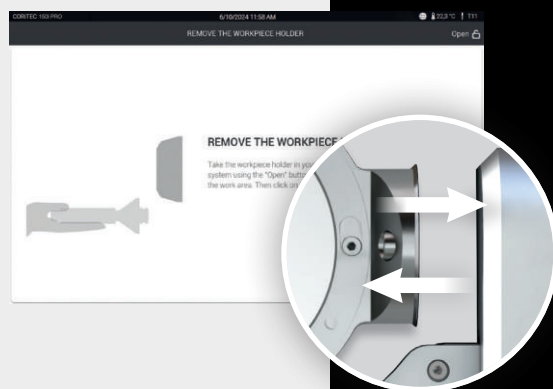
AUTOCALIBRATION

Autocalibration enables quick and convenient handling to ensure consistently precise results. With intuitive step-by-step instructions and direct integration into the machine control system, the calibration process is simple and efficient. This saves you time and resources, while you can count on reliable and consistent precision.



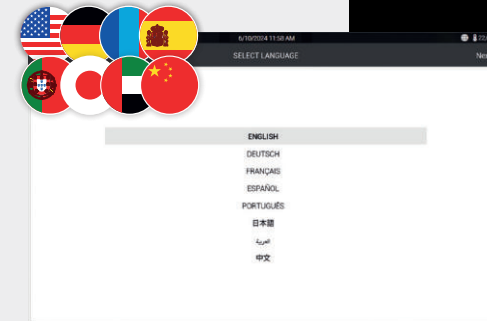
ASSISTANT-GUIDED CLEANING

The assistant-guided cleaning process makes **wet and dry cleaning** your machine simple and efficient. The integrated step-by-step instructions ensure that the cleaning process is completed quickly and reliably – without time-consuming preparation or complex instructions. This function not only helps to extend the service life of the machine, but also ensures consistently high performance.



EASY HOLDER CHANGE

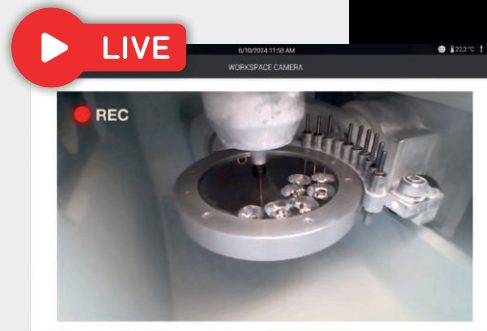
The quick-clamping system makes changing the holder precise and uncomplicated. The control software guides users through the process with intuitive step-by-step instructions. As a result, the holder is positioned quickly and accurately, ensuring smooth operation and consistently precise results. At the same time, the workflow is optimized and the time required is significantly reduced.



INDIVIDUAL LANGUAGE SELECTION

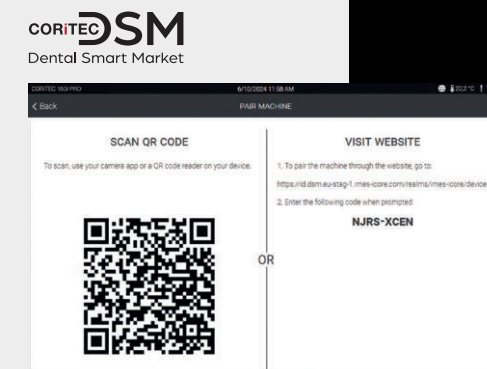
The flexible language options of the program interface support the operation in the preferred language. This versatility ensures intuitive use and maximum efficiency in day-to-day work worldwide.

- ✓ German
- ✓ English
- ✓ Chinese
- ✓ Spanish
- ✓ French
- ✓ Portuguese
- ✓ Japanese
- ✓ Arabic



MILLING PROCESS MONITORING

The integrated HD camera enables direct monitoring of the milling process in real time. If questions or challenges arise, the support team can respond quickly to ensure efficient support.

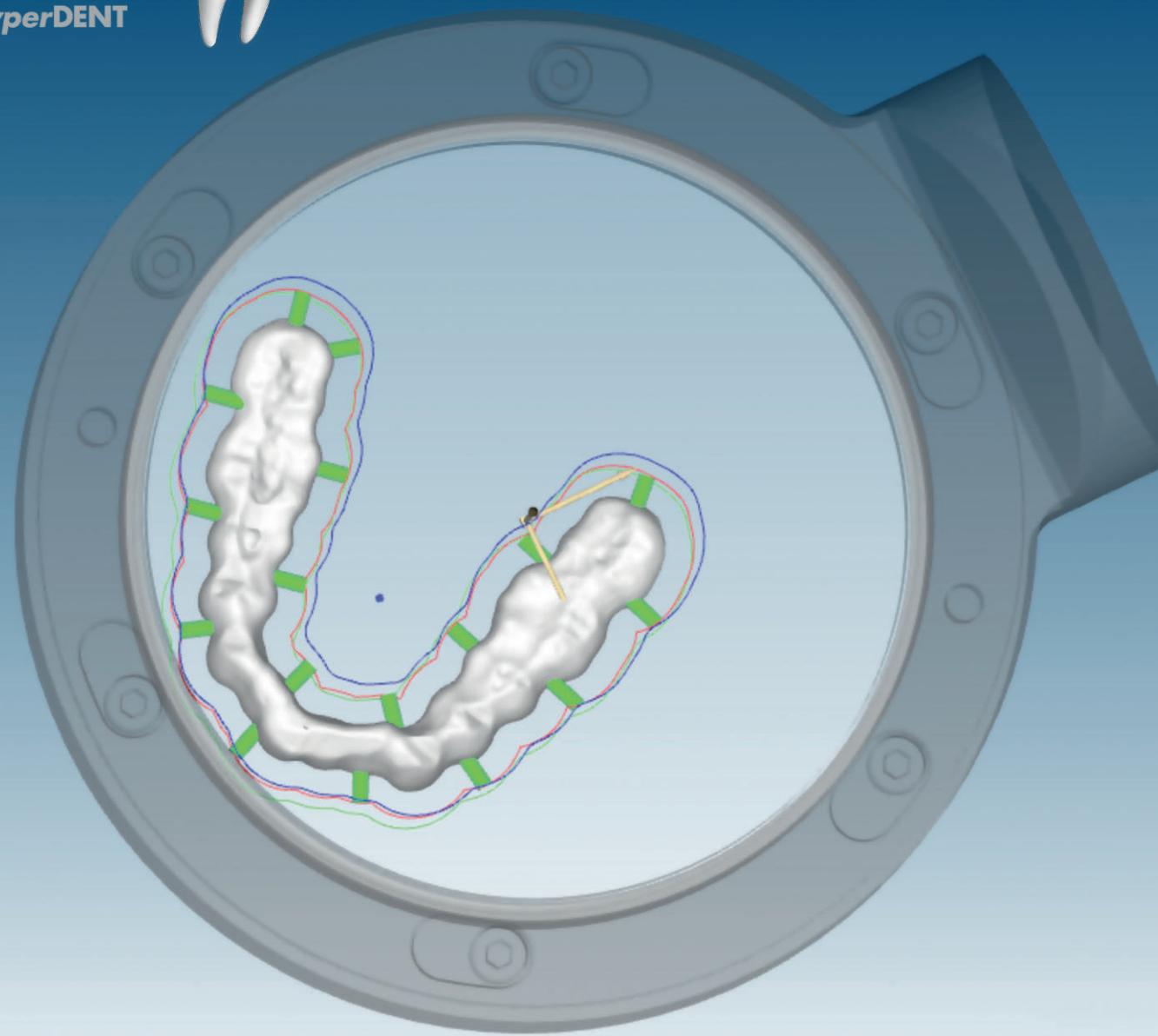


DSM CONNECTION

The DSM connection enables live monitoring of your machine systems and targeted optimization of your workflow.

- ✓ Automatic updates & 24/7 access
- ✓ View machine status live
- ✓ Maintenance reminder
- ✓ Warranty protection
- ✓ Machine park overview





Smart High-End Solution

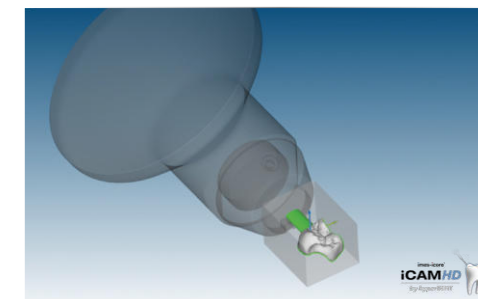
PERFECTLY INTEGRATED CAM SOFTWARE
FOR ALL CORiTEC MACHINES, MATERIALS
AND INDICATIONS

CORiTEC® iCAMHD

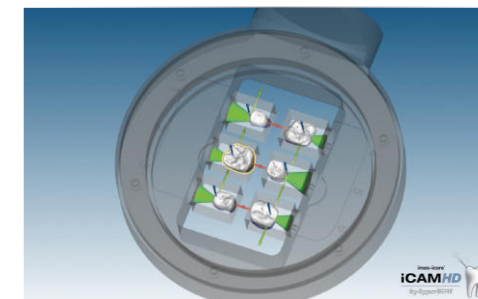
The CORiTEC iCAMHD software combines a high level of automation with efficient order management. Thanks to the intuitive workflow, familiarization is quick and easy, while processing options can be managed individually. Automatic updates keep the software up to date at all times. Validated strategies ensure precise results and excellent surface quality, while integrated collision monitoring guarantees maximum safety in process control.

iCAM HD advantages at a glance:

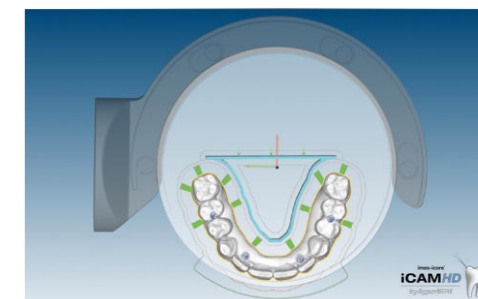
- ✓ hyperDENT based CAM software
- ✓ CAM templates for fast and precise results
- ✓ High level of automation for efficient and precise production
- ✓ Intuitive workflow for quick and easy familiarization
- ✓ Automatic updates keep the software up to date at all times
- ✓ Perfect tool paths for the highest surface quality
- ✓ Collision monitoring ensures maximum safety and reliability



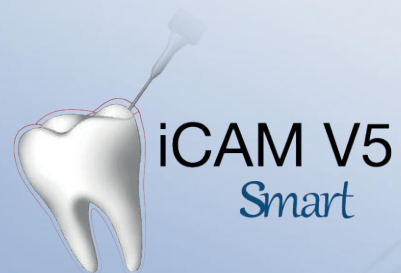
Ceramic block in universal holder



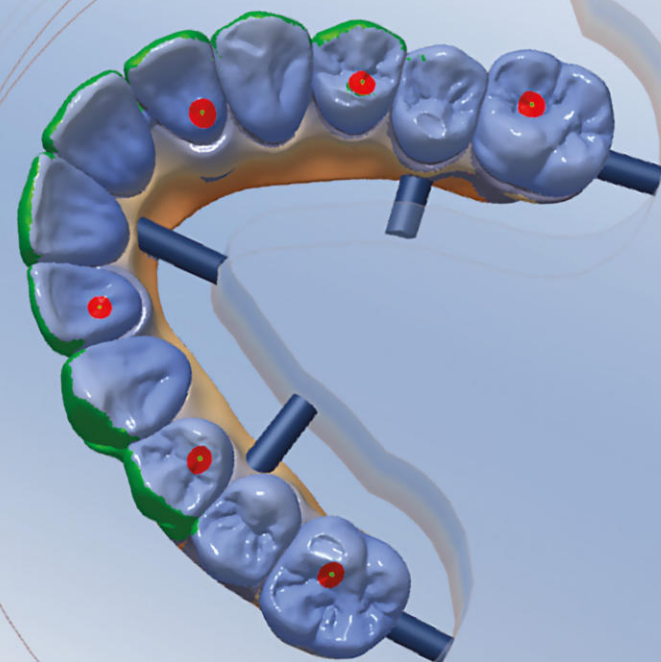
Ceramic blocks in 6-fold holder



Various applications in the C-Clamp holder



iCAM V5
Smart



Flexible and smart

PERFECTLY INTEGRATED CAM SOFTWARE
FOR ALL CORiTEC MACHINES, MATERIALS
AND INDICATIONS

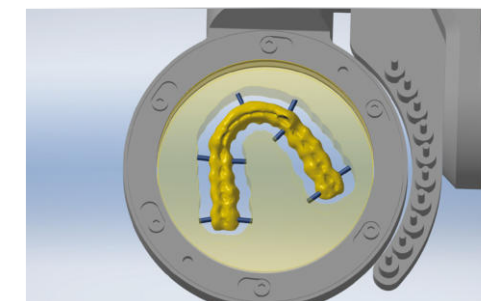
CORiTEC® iCAM V5 smart

The CORiTEC iCAM V5 offers exceptional surface quality and maximum accuracy of fit – ideal for all common dental materials. Optimized tool strategies reduce machining time, extend tool life and ensure particularly smooth machine operation. This ensures precise results in 5-axis machining and maximum efficiency of your CAD/CAM system.

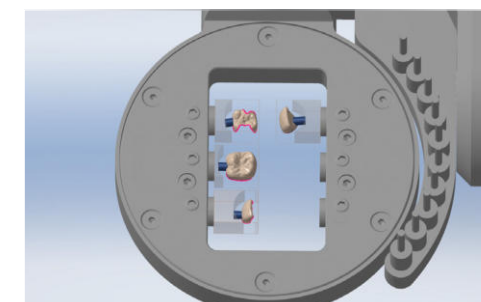
Your advantages at a glance:

- ✓ **5-axis simultaneous machining:** Precision even with undercuts
- ✓ **No enforced annual fees:** Maximum cost control
- ✓ **Wizard workflow:** Fully automatic, intuitive operation
- ✓ **ReFit function:** Flexible exchange of abutment geometries
- ✓ **Retaining bars:** Securely positioned for perfect results

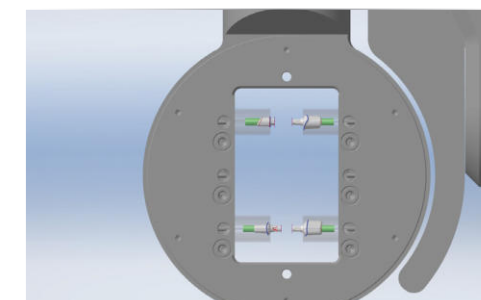
Experience CAM technology that revolutionizes your production!



Bite splint made of PMMA in blank holder



Ceramic blocks in 6-fold holder



PreMilled titanium abutments in a 6-position holder

Coordinated, Validated Workflow of the Overall System

SEAMLESSLY INTERLOCKING PROCESSES

The combination of iCAM software, high-quality milling machines and specially developed CORiTEC tools provides you with a validated complete system with full service and support from a single source. imes-core represents first-class production solutions that seamlessly combine software, precise milling and grinding tools and high-performance machine technology.



Perfect Synergy

Between Machine, Milling Tools, iCAM and Materials

CORiTEC® temp PMMA disc

CORiTEC temp PMMA disc is suitable for the fabrication of:

- ✓ Long-term temporary crown and bridge restorations (up to 3 years) in the anterior and posterior region with up to 2 pontics
- ✓ Splints for therapeutic restorations for temporomandibular joint problems and functional diagnostics
- ✓ Denture bases
- ✓ Temporary anterior veneers for esthetic shape corrections

RADIUS MILLING TOOL



Cutters and Grinders

CORiTEC® TOOLS

CORiTEC milling tools guarantee precision and efficiency. Perfectly matched to our machines, they offer maximum performance, durability and optimum results – combined with the right materials for your applications.

- ✓ 3 mm
- ✓ High speed milling tools
- ✓ Torus milling tools
- ✓ Shaft tools
- ✓ T-milling tools
- ✓ Standard milling tools

CAD/CAM Materials

CORiTEC® MATERIALS

Our specially developed materials are perfectly matched to CORiTEC machines and guarantee maximum precision and quality. Made in Germany and validated for a wide range of applications, they meet the highest standards for the best results.

- ✓ priti®multidisc
- ✓ CORiTEC® splint comfort Polymere
- ✓ CORiTEC® splint basic Polymere
- ✓ CORiTEC® temp PMMA disc
- ✓ CORiTEC® gum PMMA disc
- ✓ CORiTEC® CoCr M6 / W8 disc
- ✓ GC® Initial LiSi Block
- ✓ GC® cerasmart270

- ✓ VITA ENAMIC® multiColor
- ✓ VITA VIONIC® BASE DISC HI
- ✓ VITA CAD-Temp®
- ✓ VITA YZ HT / VITA YZ T
- ✓ VITA YZ ST / VITA YZ XT
- ✓ VITA BLOCS® Mark II
- ✓ VITA SUPRINTITY® PC
- ✓ VITA ST, TriLuxe forte
- ✓ VITA YZ MULTITRANSLUCENT

ALL TOOLS
AT A GLANCE



To the milling tool brochure

ALL MATERIALS
AT A GLANCE



To CORiTEC® Materials
www.pritidenta.com

Suction Systems

DUST PROTECTION AND AIR CLEANING

	iVAC silent	iVAC silent PRO	iVAC eco+
Technical data			
Volume flow	160 m³/h	240 m³/h	260 m³/h
Power	490 W	1610 W	1200 W
Filter system	Teflon filter cartridge, automatic cleaning	Teflon filter cartridge, automatic cleaning	Filter bag, HEPA filter
Filter flow	8 l/min / 2.11 gpm	18 l/min / 4.76 gpm	25 l/min / 6.6 gpm
Compatibility			
CORiTEC 150i Series	●●○	●●●	●●●



Scanner

DIGITAL IMPRESSION

CORiTEC® i3Dscan color HR

- ✓ Enormously high scanning efficiency and precision
- ✓ Color texture scan
- ✓ Blue-light LED & high-resolution camera (3.2 MP)
- ✓ All modules included in the scope of delivery



CORiTEC® i3Dscan color

- ✓ Automatic object guidance into the measuring field
- ✓ Modern touch operation
- ✓ Easy to work with 180° opening

Sintering Furnaces

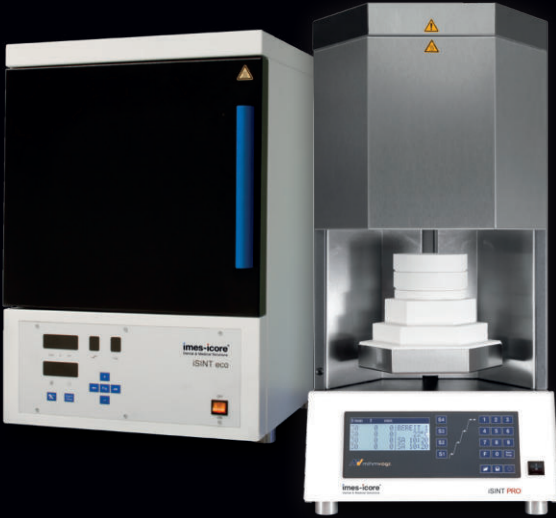
SINTERING PROCESS FOR ZIRCONIA

iSINT eco

The iSINT eco combines high-quality technology with a space-saving design and a fair price. With a sintering dish of Ø 100 mm, it offers capacity for up to 25 units. The door hinge can be flexibly mounted on the right or left – ideal for a versatile laboratory environment.

iSINT PRO

The iSINT PRO enables the sintering of up to 80 individual crowns. With four MoSi2 heating elements, it offers both long-term sintering and SPEED sintering at up to 120°C/minute. A 4-line LCD display simplifies program control. Additional functions such as timer and service programs as well as a pre-drying program make the iSINT PRO a flexible solution for modern laboratories.



	iSINT eco	iSINT PRO
Technical data		
Heating elements	4	4
Program memories	9	30
Combustion chamber capacity	1 x 100 (approx. 25 units)	2 x 120 (approx. 80 units)
Max. Heating rate	25 °C/min / 77 °F/min	120 °C/min / 248 °F/min
Power	1720 W	3200 W
Lift function	-	✓
Speedsintering	-	✓

Machine Table

SOPHISTICATED FUNCTIONALITY

Our machine tables combine stability, functionality and sophisticated design - for convenient and efficient use. They offer storage space, stable castors, drawers and space for extraction systems.

- ✓ Highest quality - Made in Germany
- ✓ Stability for dynamic processes
- ✓ High level of comfort and ergonomics



Everything at a glance

CORiTEC® 150i SERIES IN NUMBERS

CORiTEC 150i dry		CORiTEC 150i PRO
Mechanics / electronics		
Basic structure (exterior)	Closed mono-block cast body	
Number of axes / operation type	5 axes, simultaneous processing	
Rotation angle	A-axis 360°, B-axis 130°	
Spindle type	High frequency spindle	
Max. Spindle speed / power	100.000 rpm / 860 W	
Spindle cooling	Air cooled	
Manual quick clamping system	✓	
Tools	Milling and grinding tools with 3 mm shaft	
Tool changer	10-fold	
Tool length control	≤ 0.002 mm precision	
Software	SmartControl™ , Windows based	
Control PC / Display	Integrated control PC / 10'1" touchscreen	
Illumination	Dynamic LED illumination	
Air pressure	3 bar / 43.51 psi @ 50 l/min / 13.2 gpm	
Coolant tank	3 l / 0.8 gal	
Connection requirements		
Weight	75 kg	
Width x depth x height	422 x 556 x 644 mm / 16.6 x 21.9 x 25.4 inch	
Line voltage / frequency	100 V – 240 V / 50/60 Hz	

Global Support

SALES AND SUPPORT PARTNERS
IN OVER 100 COUNTRIES



Since 2002, imes-icore® has been a leader in CAD/CAM systems for the dental industry. With customized solutions for laboratories, milling centers and dental practices of all sizes, we offer high-performance milling and grinding systems. Our open system philosophy guarantees easy integration into existing workflows.



To the imes-icore
website



Configure machine
directly

imes-icore®
Dental & Medical Solutions

imes-icore GmbH
Im Leibolzgraben 16
36132 Eiterfeld

☎ +49 (0) 66 72/898 228
✉ dental@imes-icore.com
www.imes-icore.com